

Spatial Data Infrastructure – Asia and the Pacific (SDI-AP) is a free electronic newsletter from the [Global Spatial Data Infrastructure Association \(GSDI\)](#) which is available in both English and Chinese language versions. The newsletter is produced for people interested in Spatial Data Infrastructure, GIS, remote sensing and geospatial data issues in Asia and the Pacific. It aims to raise awareness and provide useful information to strengthen SDI initiatives and support synchronising these activities across the region. Support for the newsletter is also provided by the [Permanent Committee on Geographic Information for Asia and the Pacific \(PCGIAP\)](#), a regional forum to enhance cooperation in the development of a regional geographic information infrastructure. The newsletter is currently being produced for GSDI by the [Centre for Spatial Data Infrastructures and Land Administration](#) at the University of Melbourne.



To subscribe to SDI-AP use [this link](#). Back issues of the newsletter are at the [GSDI website](#). You can also sign up for [GSDI News List](#) to receive alerts of special news and announcements as well as notification of new issues of the SDI-AP newsletter. To subscribe and access archives of thematic or regional discussion lists [please visit](#).

## Contents

Message from the editors .....	1
Contributions.....	1
GSDI News .....	2
SDI News, Links, Papers, Presentations.....	2
SDI Spotlight.....	2
GIS Tools, Software, Data.....	3
News from abroad .....	5
Articles .....	6
Books and Journals (including Videos and Web publications).....	8
Just for Fun!.....	9
Training Opportunities .....	10
Funding Opportunities, Awards, Grants .....	12
Employment Opportunities .....	14
Conference Proceedings .....	14
Conferences, Events .....	15

## Message from the editors

Welcome to the July issue of the newsletter for the year 2012.

If you have news or information related to SDI, GIS, RS or spatial data that you would like to share with the community (e.g. workshop announcements, publications, reports, websites of interest etc.), kindly [send us](#) the materials by the 25<sup>th</sup> of the each month for your contribution to be included in the next newsletter.

Malcolm Park and Serryn Eagleson ([Editors](#)), at the [Centre for Spatial Data Infrastructures and Land Administration](#), The University of Melbourne.

## Contributions

Thank you to the following people and organisations for their contributions to this issue: Baek Wonkug for news feeds, Jeremy Shen and Bruce Lan and colleagues for the Chinese translation as well as Shivani Lal, *GIS Development*, *GeoSpatial World* and *Asia Surveying & Mapping* magazine for directly contributing to the newsletter.

[Back to contents](#)

## GSDI News

### International Geospatial Society (IGS) Free Memberships

At its recent meeting, the GSDI Board of Directors passed a motion that allows individuals in low and very low income nations to join the International Geospatial Society (IGS) by providing specific information of value to the global community in lieu of annual cash dues. To join, simply add your professional profile to the growing interconnected network of geospatial specialists across the globe. Benefits of membership in IGS are listed at <http://www.igeoss.org/benefits>. For further information, contact [Harlan Onsrud](#), Executive Director, GSDI Association.

[Back to contents](#)

## SDI News, Links, Papers, Presentations

[Back to contents](#)

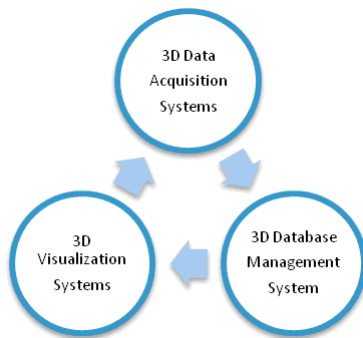
## SDI Spotlight

This month the "Spotlight" contributor is Davood Shojaei, a PhD candidate at the University of Melbourne CSDILA.

### 3D Cadastre and Visualization

The importance of managing properties and people's interest in complex multi-level developments is increasing, due to population growth and shortage of land in urban areas. This trend has caused a growing importance of Rights, Restrictions and Responsibilities (RRRs) particularly in urban areas. Accordingly, an efficient system is required to record, manage and visualize ownership information and RRRs effectively. This system is referred as a cadastre which is the engine of land administration systems.

Cadastrals are under pressure to change the way they capture, register and visualize ownership information. Current cadastral systems are two-dimensional and parcel-based which are not able to model the 3D real world efficiently.



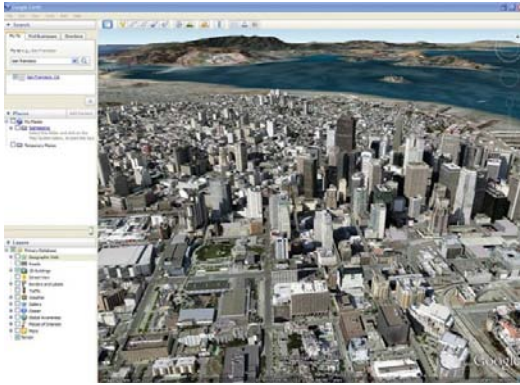
In reality, new types of interest in land such as buildings beyond parcel boundaries or overlapped parcels are emerged which are not possible to manage in a two dimensional cadastral system efficiently. These new types of ownership forced authorities to replace the traditional methods of land registration with new approaches. Also, emerging 3D technologies has encouraged scientists to use them in various applications particularly in cadastral applications. New 3D data acquisition methods such as Light Detection and Ranging (LIDAR), 3D spatial databases such as Oracle for managing 3D data and 3D visualization platforms such as Google Earth are some examples of the recent 3D technologies.

The shortcomings of current cadastral systems and availability of new technologies are the main reasons to move from 2D to 3D cadastre. It is expected that 3D cadastre manages 3D properties and associated rights more efficient than 2D one. "3D cadastre would be a tool in a land administration system to spatially and three dimensionally register land rights, restrictions and responsibilities. 3D cadastre should have the capability to capture, store, edit, query, analyze and visualize multi-complex properties and infrastructure objects in a defined and clear legal, institutional and technical framework with a documented set of standards." [1].

Current 3D visualization methods in the cadastre are often limited to 2D techniques, such as cross-sections and isometric diagrams to represent properties and associated interests. While this has been a common practice for experts such as land registration officers and cadastral surveyors, non-experts such as the public, lawyers and real estate agents often find these methods difficult to understand and interpret particularly in modern complex land developments.

[Back to contents](#)

The availability of faster and more efficient technologies is driving the replacement of these traditional 2D representation methods with 3D visualization approaches. Computer simulations and visualization tools are becoming more and more sophisticated. However use and adoption of these tools in cadastre and registry of property are very limited, mainly due to the complex legal and modeling requirements. While the physical definition of properties is an important aspect, the legal definition is equally significant. Cadastral systems have specific visualization requirements and there is a wide variety of users each with their own needs and expectations.



In this research a specification of 3D cadastral visualization is defined and this specification includes a set of features which are necessary for representing 3D properties and associated rights. These investigations are as a part of a research project (an ARC Linkage Project-Land and Property Information in 3D) funded by the Australian Research Council (ARC) in collaboration with the Centre for Spatial Data Infrastructures and Land Administration, the University of Melbourne, Land Victoria (VIC), Land and Property Management Authority (NSW), Australian Research Council (ARC), Intergovernmental Committee on Surveying and Mapping (ICSM), VEKTA Australia, Alexander Symonds Pty Ltd, Fender Katsalidis Architects, PSMA Australia, and Strata Community Australia.

#### Reference

1. Aien, A., et al., *3D Cadastre in Victoria Australia*, in *GIM International*, 2011.

The editors remind our subscribers and readers that we welcome contributions for the *Spotlight* feature.

### GIS Tools, Software, Data

#### [Google Announces Massively Improved 3D Views For Google Earth](#)

At a press event in San Francisco in early June, Google announced that it will soon feature far better 3D maps in Google Earth. The company also announced that Google Maps for mobile will soon feature offline caching. This feature will come to Google Maps to Android soon. Google says it wants to bring this feature to all platforms in the long run. Users will be able to download parts of a map to their devices and then use them when they are offline.

The company also announced that its Street View cars have now driven 5 million miles and collected 20 petabytes worth of imagery data. Google also announced that it is bringing Map Maker to South Africa and Egypt today. Google's engineering director for Street View, Luc Vincent also announced that the company has now managed to put the hardware that Google uses to capture its Street View data into a backpack called the Street View Trekker.

Source: Techcrunch.com

#### [Get ready for the mobile map wars](#)

For many people, phones have become an important way to navigate the world, and mobile maps are at the core of the journey. They are often the critical element in commerce, socializing and search. So far, Google has reigned supreme in the mobile map world, with its maps on every iPhone sold so far — and, of course, on every phone based on its own Android operating system.

Last week, though, Apple gave notice it would enter the battle, announcing that in the fall, its phones would no longer carry Google maps, but instead would have Apple's own map service built in, part of its new mobile operating system. Maps are simply too important to be left to a rival.

The question is: Can Apple build a map service that does as good a job, or a better one, than Google has?

Source: NY Times



#### [3D Maps: Nokia Was There Before Apple](#)

Nokia's maps are not only powered by C3 technologies, the same company that Apple purchased back in October, but they also behave almost identically to what you'll find in iOS 6, offering the exact same controls, except without the multi-touch support. The maps even render in the same fashion as they do on iOS.

[Back to contents](#)

To run these 3D maps on your own computer, all you'll need to do is install a small, 8.4MB maps plugin. On the maps page, just roll over the "map view" menu on the right hand side of the screen, and select "Get Maps 3D." You will be guided to a page where you can download the plugin, assuming you are using a supported browser.

Source: [Wall Street Journal blog](#)

### **ALSO** [Nokia to step up investment in mapping business](#)

Nokia Corp. will step up investment in its digital mapping business, using leading-edge technology to differentiate itself from competitors as it seeks to regain lost ground.

Source: Geospatial World and the [Wall Street Jnl](#)

### [Bhutan: geospatial datasets on natural resources dynamics](#)

ICIMOD released key geospatial datasets on natural resources dynamics of Bhutan in the joint workshop sponsored by SERVIR and organized together with Ministry of Agriculture and Forests on 24 April 2012 in Thimpu. More than 20 participants from different Ministries and Government department participated in the workshop. The dataset consists of multi-temporal database mainly derived from remote sensing on cryosphere (snow and glaciers) and land cover with their change analysis of entire country Bhutan [land cover database, glacier database, snow cover database, forest fire detection and monitoring system].

The datasets released can be accessed through the interactive web based application on the Mountain GeoPortal at [ICIMOD website](#), which not only provides access to datasets, but also includes simple GIS functionality, spatial visualization including statistical analytical tools.

### [Singapore Land Authority launches Crowd-Sourcing Tools](#)

Singapore Land Authority (SLA) launched **OneMap Crowd Sourcing Tools** to provide organisations with map facilities to locate interactive activities and information.

OneMap Crowd Sourcing Tools is a beta set of map-based tools that community, and organisations or Non-Governmental Organisations can use to facilitate crowd sourcing and create a function on their websites where OneMap will serve a map for users to tag the locations of crowd-sourced information.

The Accounting and Corporate Regulatory (ACRA) also launched its **BizQuery** service on OneMap to enable users to find the location of registered businesses in Singapore. The same location-based information will be linked to ACRA's online portal for direct purchase of the corresponding business information.

[OneMap](#) is the first major application of an integrated map system for government agencies to deliver location-based services and information. It is a multi-agency collaboration with many government agencies currently participating and contributing information. It is managed and operated by the SLA.

Since its launched two years ago, OneMap has attracted up to 28 participating agencies from public sector who have provided 50 information themes and 29 service offerings to citizen.

[Crowdsource your way through OneMap](#) (23 May 2012)

[A One-Stop Solution for Information Needs: First Whole-of-Government Intelligent Map Portal](#) (31 March, 2010)

Source: SLA Press Release

### [The KoBo Platform: Data Collection for Real Practitioners](#)

KoBoToolbox was co-founded by Phuong Pham and Patrick Vinck now based at the Harvard Humanitarian Initiative who were confronted by the challenges of collecting data in a secure fashion, increasing the quality of survey data, and making results available rapidly after data collection. They first piloted handheld digital data collection in 2007 in northern Uganda. The effort gave its name to the project: KoBo means "transfer" in Acholi, one of the local languages. The development of KoBoToolbox was uniquely driven by field-based needs and challenges.

Source: Patrick Meier's [iRevolution](#) website

### [New Zealand to track high risk offenders via GPS](#)

High risk offenders will be tracked 24X7 via GPS for the first time in New Zealand. Offenders will be fitted with GPS-equipped ankle bracelets so authorities can monitor their movements around the clock, announced New Zealand government.

Source: Geospatial World and [NZ Herald](#)

### [New Australian marine parks](#)

Australia will create the world's largest network of marine parks as the world "turns a corner" on ocean protection. The network, announced on Thursday 14 June 2012, is made up of five main zones in offshore waters surrounding every state and territory. Source: ABC

[Maps](#)



[Back to contents](#)

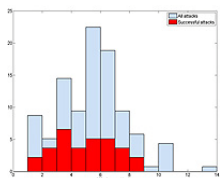
### [Using GPS for weather forecasts](#)

The satellite-based Global Positioning System (GPS) technology that guides modern in-car navigation systems is now being used to improve weather forecasts.

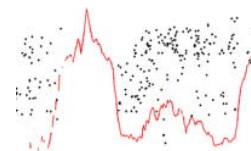
Researchers at RMIT University's SPACE Research Centre and the Bureau of Meteorology are using GPS and low earth orbit satellites to provide an additional type of temperature profile observation for use in weather forecasting computer models.

Source: [ScienceAlert](#), [TG Daily](#), [Geospatial World](#), and [RMIT News release](#)

### [New Zealand Defence Force learns piracy patterns using satellite data](#)



A study by the New Zealand Defence Force (NZDF) revealed a strong correlation between successful pirate activity and wind speed and wave height. Using information from European Space Agency's (ESA) GlobWave project, the NZDF team observed that during summer (June to September) in Indian Ocean, there were significant drop in pirate activities. The team concluded that during the summer, high waves made difficult to sail boats and hence there were less pirate activities.



Source: [Geospatial World](#) and [ESA](#)

### [GIS tools are not just for geeks](#)

Information, not money or ammunition, is now the holy grail of business organisations and governments across the world. Computer programming and computer graphics, apart from enabling us to visualise data, have made sophisticated data analysis possible, which allows one to understand the nuances in large data sets.

Geographical data, being bulky and complex, is a good example of how valuable the sifting of large volumes of information can be. Statistical information pertaining to different aspects of a well-defined geographical region, allowed to vary with various geographical parameters such as latitude, longitude, altitude, population, jurisdictions and other variables, is termed 'geospatial data'.

Source: The Hindu

### [New Zealand gets new geological map](#)

GNS Science and Waikato University prepared and released a new geological map of the Hawke's Bay and central North Island. The map is the final in a series of updated geological maps for New Zealand. The map and text describe the geology of an area that lies close to a tectonic plate boundary, stretching from the central North Island volcanic plateau and the lowlands of the Manawatu region, eastwards across the ranges into Hawke's Bay.

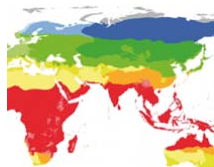
Source: [Geospatial World](#) and [GNS Science media release](#)

[Back to contents](#)

## News from abroad

*"This section has been included to highlight some of the developments happening outside the region which demonstrate SDI in action."*

### [GAEZ geospatial data portal](#)

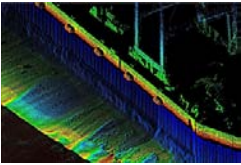


FAO and IIASA launched the new GAEZ data portal (version 3.0) with global, regional and local geospatial and tabular information on agricultural resources and potential on 25 May 2012.

The GAEZ modeling framework for crop potential assessment uses detailed agronomic-based knowledge to assess land suitability, potential attainable yields and potential production of crops for specified management assumptions and input levels, both for rain-fed and irrigated conditions. GAEZ database outputs include thousands of global datasets. The tabular outputs are aggregated for current major land use/cover patterns and by administrative units, and land protection status. These outputs provide key data, knowledge and information related to availability of natural resources used in a number of applications including land evaluation, agricultural production potentials, and sustainable management of natural resources, ecosystem services and ecologic and economic modeling.

FAO GAEZ Data Portal version 3.0 release May 25, 2012, can be accessed [here](#).

[Back to contents](#)



## [Real-Time Simultaneous Precise 4D Surveying Above and Below Water](#)

The Miami Port and Terminal Technology USA 2012 4th international conference and exhibition saw the launch of the industry's first custom designed 4D (X,Y,Z and TIME) land and marine survey vessel.

Source: LiDAR News and MDL News release

## [Scientists map local underwater Grand Canyon](#)

Scientists created a map of the ocean floor off the coast of San Francisco, US, using multi-beam technology. "You send beams of sound down and it bounces off the sea floor and brings back an image. This allows us to see the relief of the sea floor, to see it go up and down," said Maria Brown, a National Marine Sanctuary superintendent.

Source: Geospatial World and [ABC \(San Francisco\)](#)

[Back to contents](#)

## Articles

### [Modeling and visualising geodemography of poverty and wealth across Nigerian local government areas](#) by Adegbola Ojo and Patrick Oseloka Ezepeue (2012), *The Social Sciences* 7(1): 145-158.

**Abstract:** Numerous researchers, commentators and policy makers have described poverty and inequality as the greatest challenges facing the Nigerian populace. Successive governments have pursued different policy initiatives with a view to mitigating the problem. In spite of large scale investment committed to poverty alleviation programmes, >50% of Nigerians still live in relative poverty with over a third of the population languishing in extreme poverty. To date, there is no published work examining the scale of inequality in poverty and prosperity amongst Nigerians at local spatial scales. In this study, we demonstrate the first attempt to exemplify the potential of geodemographics and spatial analysis in exposing poverty and wealth differences within and between Nigerian Local Government Areas (LGAs). We use a recently developed Nigerian LGA geodemographic system to analyse data for five poverty quintiles. We discover that different local community types would be better suited to different initiatives as the magnitudes and direction of their predisposition for poverty and wealth vary. The findings reinforce the view that there is value in using geodemographic modeling techniques to better target local populations and to support poverty alleviation programmes in developing countries.

### [FIG Article of the Month](#)

Jason Smith, President, Institute of Civil Engineering Surveyors, UK: [BIM – A Contractors Perspective](#)  
Building information modelling (BIM) is an approach to designing and documenting building projects and is gaining acceptance in many jurisdictions across the world. It allows all stakeholders and actors within a building project the seamless link between the owner, the designers, the construction professionals, the master builders and the end users. In an era where our profession works towards managing all information spatially, BIM is an enabling platform that should bring not only sharing and collaboration, but also avoidance of duplication, timeliness and value adding. This paper was presented at FIG Working Week 2012 in Rome Italy.

### [Crowdsourcing and land administration](#) by Robin McLaren

The closing of the 'security of tenure gap' experienced by the poor and vulnerable in the developing world is of critical importance to future global economic progress

Source: Coordinates magazine

### [Methodology for conformance testing of spatial data infrastructure components including an example of its implementation in Slovakia](#) by T. Kliment, M. Tuchyna, & M. Kliment

*Slovak Journal of Civil Engineering*, Vol. XX, 2012, No. 1, 10 – 20. PDF format available [here](#)

**Abstract:** Before any spatial data infrastructure (SDI) is implemented as fully operational, many relevant testing procedures should take place. Such procedures should evaluate the compliancy level of particular SDI components against the relevant standards and implementing rules. Hence, they should ensure a high interoperability level. Many testing activities have already been performed within the implementation of the European SDI (INSPIRE – Infrastructure for Spatial Information in the European Community). Nevertheless, a common and versatile testing methodology, which is possible to use at any level of SDI realization is still

[Back to contents](#)

lacking. This paper proposes a conformance testing methodology for selected SDI components applicable via network services for the discovery, view and downloading of data. An example of such an implementation has taken place within an environmental SDI developed by the Slovak Environmental Agency. A testing report template summarizing the results of the tests is proposed to be considered as a common template on a national level to be used within the implementation of a National Infrastructure for Spatial Information in the Slovak Republic.

**Keywords:** SDI, INSPIRE, conformance testing, methodology, design, tools, reporting

### [FAILURE AND RESCUE](#)

Risk management includes planning for the recovery after the calamity – from the Commencement Address by the surgeon/writer Atul Gawande at Williams College on 3 June:

So you will take risks, and you will have failures. But it's what happens afterward that is defining. A failure often does not have to be a failure at all. However, you have to be ready for it—will you admit when things go wrong? Will you take steps to set them right?—because the difference between triumph and defeat, you'll find, isn't about willingness to take risks. It's about mastery of rescue.

Source: the New Yorker magazine

John Dickerson has also written a [series of articles on "Risk"](#) for the online "Slate" magazine (2010).

### [Do Not Track!](#) by GEORGE CHO

One wonders now whether geospatial technologies have exposed privacy, and whether this exposure has given rise to an unrealistic expectation of privacy protection

Source: Coordinates magazine

### [The Last Plane Table Surveyor?](#) by Norman G. Sloan

John Sanford, 83, of Lakewood, Colorado, may be the last, or almost last, plane table surveyor in the central U.S.A. John purchased his alidade and plane table for \$70 in 1950. John's most recent job was a complex topographic survey of a 90 acre farm in Okmulgee County, Oklahoma, with a creek and heavy woods. This survey was completed in April, 2012. John has used the alidade for topographic surveys in Oklahoma, Kansas, Nebraska, Montana, Wyoming, Colorado, Texas, and Columbia. John also did surveying for four years in the U.S. Army, including two years in Japan doing anti-aircraft artillery surveying.

Source: The American Surveyor

### [The Future of the Map Isn't a Map at All—It's Information](#)

*Google's vision for geospatial information: "We don't want a monoculture where there is just one map of the world. There never has been; there never will be."*

Maps can be beautiful, interesting, and, of course, useful, but there are a lot of questions we address to maps -- and these days, Google Maps specifically -- that maybe a map isn't the best tool for answering.

Source: The Atlantic Monthly

### [True vario-scale maps that support smooth zoom](#) by Peter van Oosterom & Martijn Meijers

**Introduction:** Technological advancements have led to maps being used virtually everywhere (e. g. mobile smartphones). Map use is more interactive than ever before: users can zoom in, out and navigate on the (interactive) maps. Therefore recent map generalisation research shows a move towards continuous generalisation. Although there are some useful efforts (van Kreveld, 2001; Sester and Brenner, 2005; Nöllenburg et al., 2008), but no optimal solution has come yet.

This paper introduces the first true vario-scale structure for geographic information: a small step in the scale dimension leads to a small change in representation of geographic features that are represented on the map. From the structure continuous generalisations of real world features can be derived and can be used for presenting a smooth zoom action to the user. Furthermore, mixed-scale visualisations can be derived (more and less generalised features shown together in one 2D map) that are consistent with each other. Making such a transition area is mostly one of the difficulties for 3D computer graphic solutions (e. g. using stitch strips based on triangles, like in Noguera et al., 2010).

Source: Geospatial World

### [Towards mainstream 3D geographical data](#) by Jantien Stoter et al

#### **Introduction**

Over the past ten years technologies for generating, maintaining and using 3D geo-information have matured. In addition many local governments have 3D models of the city, a large number of companies are providing

[Back to contents](#)

services for constructing 3D models, and universities and research organisations are investigating 3D technologies (3D re-construction, data management, validation and visualisation). Yet many (governmental) organisations face numerous challenges in introducing 3D applications and technologies in their day-to-day processes. Despite the practical difficulties, it is clear that 3D information is becoming increasingly important in many applications. These developments motivated a pilot in the Netherlands to advance the use of 3D in this country. The pilot was initiated by the Dutch Kadaster, Geonovum (the National Spatial Data Infrastructure executive committee in the Netherlands which develops and manages the geo-standards), the Netherlands Geodetic Commission (NCG) and the Dutch Ministry of Infrastructure and Environment.

Source: Geospatial World

[Back to contents](#)

### Books and Journals (including Videos and Web publications)

#### **[CALL for PAPERS Special Issue "Spatial Data Infrastructures, Cyberinfrastructure, and e-Science for GIScience"](#)**

A special issue of ISPRS International Journal of Geo-Information (ISSN 2220-9964).

[Deadline for manuscript submissions: 30 September 2012](#)

Recent developments in geospatial and related technologies are having profound impacts on the field of geographic information science. This special issue takes stock of these impacts through contributions from leading GIScientists working at this scientific-technological interface. An overriding goal of this special issue will be to bring much needed clarity to the broadly defined and rapidly evolving areas of SDI, cyberinfrastructure, and e-Science to provide focus and guidance to GIScientists who want to make use of stirring new developments in Information and Communication Technology such as high speed networks, high performance computing, and distributed collaborative environments.

#### **[FIG Publication No. 58: Spatially Enabled Society](#)**

Joint publication of FIG-Task Force on Spatially Enabled Society in cooperation with GSDI Association and with the support of Working Group 3 of the PCGIAP.



#### **[Borderlines blog from the New York Times](#)**

Countries are defined by the lines that divide them. But how are those lines decided — and why are some of them so strange? Borderlines explores the stories behind the global map, one line at a time.

by Frank Jacobs

Frank Jacobs is a London-based author and blogger. He writes about cartography, but only the interesting bits. His other blog is [Strange Maps](#)

#### **[Thematic Mapping blog](#)**

Terrain mapping with Mapnik

#### **[Blog of Ragnvald Larsen, geographer](#)**

Geographer working with maps at the Norwegian Directorate for Nature Management. Part of his job is to contribute to development aid projects.

#### **[International Society for Digital Earth - May, 2012 Newsletter](#)**

#### **[Thoughts on the Geospatial industry, Open Standards and Open Source](#)** Cameron Shorter's blog

#### **[New Zealand - SDI Cookbook Chapter 6 – Government and Industry, moving forward.](#)**

#### **[Carnival Of The Geospatialists #3 - Musings and Down-Right Cool Things Shared by the Geo Faithful](#)**

#### **[Open Planet 5, the magazine published for the International gvSIG Conference is now available in electronic format](#)**

#### **[SDI Magazine](#)**

[Back to contents](#)



## [Mother Pelican: A Journal of Sustainable Human Development](#)

The January 2012 issue has been posted:

[LiDAR News, Vol 2, No 10](#) (May 2012)

[Think Quarterly](#) – Google's new on-line magazine

[Coordinates](#) monthly magazine - **PDF** (June 2012)

[SERVIR-Africa community news](#)

[GISuser - GIS and Geospatial Technology News](#)

[National Geographic website](#)

[The Atlantic Cities website](#) including [Maps](#)

[Professional Surveyor](#) magazine

[The American Surveyor](#) newsletter (June 27)

[Back to contents](#)

## Just for Fun!



### [Giant Fruit-Shaped Bus Stops Line Streets in Japan](#)

Japan is known for its imaginative design, and now they've even taken boring bus stops and re-invented them as gigantic fairy tale fruits! Inspired by the pumpkin carriage from Cinderella, these juicy shelters are shaped like watermelons, strawberries, tomatoes, and oranges. Who knew sitting and waiting for the bus to come could be so much fun?

Source: [Inhabitat.com](#)

### [Building a Better Bus Stop](#)

This experimental station at boulevard Diderot is not just a place to wait for a bus. Covering an area of 80 m<sup>2</sup>, it was designed as a multi-purpose public space. Here you can buy a bus ticket, get information about the neighborhood, have a coffee, borrow a book, play music, recharge a phone, buy a meal to take away, rent an electric bike, stay warm while eating a sandwich, or set up a bag on a shelf to do your makeup. Variable light adjusts for day and night conditions. This project will also be the first urban test of materials and technological innovations ... such as ceramic furniture invented by Marc Aurel, and a sound design integrated into the fabric of furniture ...

Source: [HumanTransit.org](#) and [AtlanticCities.com](#)



### ['This Is Our Planet': Glorious Time-Lapse View of the Earth From Space](#)

The latest video made up from still images taken from the International Space Station

Source: The Atlantic Monthly – Alternative site: [Scientific American blog](#)

### [The Great Indoors, or Childhood's End?](#)

A British study called One False Move, investigating the mobility of children, found that the average eight-year-old saw its 'home habitat' shrink to one-ninth of its size within a single generation. In 1970, 80% of British kids 7 or 8 years of age were allowed to go to school unsupervised; by 1990, this figure had dropped below 10%. The result of this gradual shrinkage of children's habitat, is the effective end of the outdoor childhood.

Source: Frank Jacobs's "Strange Maps" blog and the [Daily Mail](#)



[Back to contents](#)

### [Stanford's Top Major Is Now Computer Science](#)

*In the '70s, successful Stanfordites studied Psych. Now, they prefer Engineering.*

Source: The Atlantic Monthly

### [Working the Graveyard Shift – Literally](#) by John Russo

The writer was engaged to conduct 3D Lasar Scanning for a construction project at the Los Angeles County Coroner's Office. The work entailed working overnight.

Source: LiDAR News



### [Century-old tools still in vogue for land survey](#)

At a time when modern technology has touched nearly every aspect of governance, some government offices, particularly those in taluks around the city, continue to use centuries-old conventional technology.

Visitors to Ambattur taluk office often stare in amazement at the long rows of iron chains and rods prominently displayed on the premises. They are nothing but land surveying instruments used by the surveyors.

Source: The Hindu

### [Rats with GPS backpacks prepare to sniff out landmines](#)

A team of scientists at Bucknell University, US, developed a novel system for detecting landmines by training rats equipped with GPS and wireless rucksacks to sniff out explosives and map them for destruction. They trained rats to identify the chemicals that seep into the ground from land mines and to circle around them. The rats wear palm-sized backpacks which contain GPS and a wireless transmitter, as well as an electronic reward system as an incentive.

Source: Geospatial World and the [Register](#)

[Back to contents](#)

## Training Opportunities

### [Third Open Source GIS Summer School, Girona, Spain](#)

The GIS and Remote Sensing Centre (University of Girona, Spain), Nottingham Geospatial Institute (University of Nottingham, UK) and OpenGeo are pleased to announce the Third Open Source GIS Summer School, **July 9-13th, 2012** at Girona, Spain. Building on the success of previous editions, this year's program will be focused on the development and creation of Open Web Mapping Services and Web applications.

The University of Nottingham will be strongly supporting this excellent initiative. Jeremy Morley (Lecturer and a theme leader at the NGI) will be contributing the Nottingham components for the Summer School. The course has been designed and will be conducted on a GNU/Linux operating system based on the use of the OSGeo-Live DVD.

All course materials produced for the Summer School will be made available through the [ELOGeo platform](#) for the benefit of the wider community. [More details](#).

### [Course Spotlight: Master of Spatial Information Science](#)

The University of Melbourne [Course Spotlight: Master of Spatial Information Science](#)

Spatial information is an essential and indispensable part of any economy's infrastructure. It is needed in all walks of life and on many scales, with applications in land tenure systems, environmental modelling, food production, disaster management, climate change modelling, engineering, architecture and urban planning.

Current industry shortfalls in spatial information practitioners combined with a growing demand in Australia and internationally, ensure graduates a range of well-paid job opportunities.

Find out more about the [Master of Spatial Information Science](#), as well as our [scholarship opportunities](#).

### [Learn to Use HTML5 with Esri ArcGIS](#)

Get a brief introduction to HTML5 and learn how to use HTML5 technologies with the ArcGIS API for JavaScript and ArcGIS Online.

Source: GIS User and [ESRI](#)

[Back to contents](#)

### [Large-Scale 3D Laser Scanning: The Complete Process](#)

Don't worry if you missed the live webinar, "Large-Scale 3D Laser Scanning: The Complete Process". It's now available online for you to watch any time!

### [e-Learning for the Open Geospatial Community](#)

We are pleased to inform that the course repository for the ELOGeo (An e-Learning Framework for Using Geospatial Open Data, Open Source and Open Standards) project is ready. ELOGeo is a JISC-funded project based at the Centre for Geospatial Science, the University of Nottingham in partnership with the Mimas Centre of Excellence at the University of Manchester. ELOGeo main collaborators are Open Source Geospatial Foundation, Open Geospatial Consortium (OGC), Ordnance Survey, Open Nottingham, International Cartographic Association (ICA) and gvSIG Association.  
[More details of ELOGeo.](#)

### [gvSIG Training platform opens with a first course for gvSIG users](#)

The gvSIG Association tries to increase its learning offer through online courses, publishing a new learning platform: gvSIG Training. In parallel, the gvSIG Association launches its official certification program. It's a step forward in the training processes in free geomatic, creating an online training centre, that contributes to the spreading as well as to the sustainability of the gvSIG project. Training without geographic barriers, and with the best professionals.

In this platform, you will find courses in several languages to learn to use the different applications of the gvSIG project, in a user level as well as in a developer one. The courses list will be extended gradually with different gvSIG and free geomatic specialization courses (databases, map servers...), with the objective of covering the different needs of the Community.

The courses offered by gvSIG Training are part of the training routes that are required to obtain the gvSIG official certification.

For further information:

- gvSIG Training: <<http://gvSIG-training.com/>>
- gvSIG Certifications: <<http://www.gvsig.com/services/certification>>

### **GIS Courses by Distance Education**

#### **NSW Riverina Tafe**

The courses listed below are all full Geographic Information Systems courses which can be studied over a number of semesters by distance study pathways.

[Certificate III in Spatial Information Services \(GIS\)](#)

[Certificate IV in Spatial Information Services \(GIS\)](#)

[Diploma of Spatial Information Services \(GIS\)](#)

Source: [NSW River](#)

### [Participatory Spatial Information Management and Communication Training Kit now available on-line](#)

Co-published by CTA and IFAD in English and Spanish, the Training Kit is a unique product that can be tailored to meet user needs, ensuring that employees get the best training available on Participatory Spatial Information Management and Communication.

The online version was launched at the beginning of March 2011. The DVD version was launched in December 2010. The Training Kit contains 15 Modules, each presented through a series of Units. Modules cover the entire spectrum of good developmental practice – from mobilising communities to developing a communication strategy based on the outcome of participatory mapping activities. The Modules touch on topics such as the fundamentals of training, ethics and community groundwork and processes as well as the more technical low-, mid- and high-tech participatory mapping methods.

Users decide what they want to cover and when. The product has been developed using the Multimedia Training Kit (MMTK) approach – which allows you to pick and choose those Modules, Units and components that best suit your particular requirements and develop a curriculum to suit your specific needs.

**Publishers:** Technical Centre for Agricultural and Rural Co-operation ACP-EU (CTA), Wageningen, The Netherlands and International Fund for Agricultural Development (IFAD), Rome, Italy

Source: [The Centre for Agricultural and Rural Cooperation](#)

## Funding Opportunities, Awards, Grants

### [Asia Geospatial Excellence Awards](#)

The geospatial industry in Asia Pacific has been evolving with respectable reputation in the global arena. This is largely owing to the innovations and excellence brought forward by geospatial technology developers, professionals, end users and policy makers. In order to recognise and encourage such efforts, Geospatial Media & Communications will confer awards and recognitions for exemplary technology innovations and applications development in the region. The awardees shall be selected through a preset evaluation process and eventually judged by an international panel of experts. The awards shall be presented under the auspices of Asia Geospatial Forum 2012 (17-9 September, Hanoi).

**Submit prior to July 31, 2012**

### [APN 2012 Calls for Proposals](#)

The Asia-Pacific Network for Global Change (APN) has announced a call for proposals for funding from April 2013. The proposals can be submitted under two separate programmes:

- 1) regional global change research (ARCP Programme); and
- 2) scientific capacity development (CAPaBLE Programme).

Deadline for Advisory Service (Voluntary). Submission of Letter of Intent: Sunday 1 July 2012, midnight (24:00) – Japanese Standard Time

Deadline for Stage 1. Submission of Summary Proposal (Compulsory, template for ARCP; for CAPaBLE): Sunday 12 August 2012, midnight (24:00) – Japanese Standard Time

### [2012 Call for applications of the OWSD Fellowship](#)

Applications are being accepted by the Organization for Women in Science for the Developing World (OWSD) for Postgraduate Training Fellowships for Women Scientists from Sub-Saharan Africa and **Least Developed Countries** (LDCs) at Centres of Excellence in the South.

The OWSD postgraduate fellowship is awarded to women scientists to pursue a PhD at a centre of excellence in the South in a field of the natural sciences. Applications are accepted from female scientists in all branches of the natural sciences.

See link for more information on the application procedure, eligibility criteria and to download the application form.

**Deadline for submission of applications is 31 July 2012.**

#### **List of Least Developed Countries (LDC)**

Afghanistan, Angola, **Bangladesh**, Benin, **Bhutan**, Burkina Faso, Burundi, **Cambodia**, Central African Republic, Chad, Comoros Islands, Democratic Republic of Congo, Djibouti, Equatorial Guinea, Eritrea, Ethiopia, Gambia, Guinea, Guinea-Bissau, Haiti, **Kiribati**, **Lao People's Democratic Republic**, Lesotho, Liberia, Madagascar, Malawi, **Maldives**, Mali, Mauritania, Mozambique, **Myanmar**, **Nepal**, Niger, Rwanda, **Samoa**, Sao Tome and Principe, Senegal, Sierra Leone, **Solomon Islands**, Somalia, Sudan, **Timor-Leste**, Togo, **Tuvalu**, Uganda, the United Republic of Tanzania, **Vanuatu**, Yemen and Zambia.

### [Ideas Challenge](#)

The Ideas Challenge is at the core of the GMES Masters competition. It invites students, entrepreneurs, start-up companies and SMEs to submit their ideas for an innovative commercial use of GMES to a secure online database on the GMES Masters website. The best idea for a commercially viable business idea using GMES data will be rewarded. The winner will be rewarded with a cash prize of EUR 10,000 as well as the chance to get his idea further developed in one of the six ESA Business Incubation Centres (BICs). The incubation package has a value of up to EUR 60,000.

### [ESA App Challenge](#)

The European Space Agency (ESA) will award the ESA App Challenge to the best application idea for the usage of GMES on mobile phones. Proposals shall address one or more GMES main thematic areas (land, marine environment, atmosphere, climate change, emergency management). ESA is looking for ideas that can be implemented quickly into a profitable business. The application should consist of a base app containing info and news on GMES, as well as one or more specific content modules that provide relevant location-based data to users in real time. The winner will be considered for support by one of the six European Space Agency's Business Incubation Centres (ESA BICs) across Europe (value up to EUR 60,000).

[Back to contents](#)

### **European Space Imaging High-Res Challenge**

European Space Imaging (EUSI) is Europe's leading provider of Very High-Resolution (VHR) satellite data. EUSI will award the best application idea using the most advanced VHR satellite data. Application ideas which are easily implementable, sustainable, cut costs and create efficiencies are of high interest. Participants are required to submit detailed application ideas including business concepts. The winner will be awarded a data package of EUSI satellite data worth up to EUR 20,000 for use in further developing the winning application.

### **DLR Environmental Challenge**

DLR is looking for new applications in Earth observation, especially proposals addressing the mapping of the environment and climate. Ideas for using Earth observation to manage sustainable supplies of energy are also welcome. In addition to any kind of non-satellite geoinformation, proposals should be based on existing or imminent Earth observation satellite data that is available either for free or under commercial terms. The product or service generated from the idea should support either professionals from organisations and companies in environmental assessment, or the general public and consumer-oriented markets. Both regional and global applications and services are possible. Innovative ways to link the service with users are especially encouraged. The ideas should also describe a realistic scenario for their implementation involving either the general public or commercial benefits. The winner(s) will receive a voucher for a workshop or initial coaching according to what further realisation of the idea requires.

### **Best Service Challenge**

The Best Service Challenge invites service providers to upload profiles of their existing services within the main thematic areas of GMES to the GMES Masters competition website. The Best Service Challenge aims at increasing the awareness of existing Earth Monitoring Services and their benefits to European citizens. The winner of the Best Service Challenge will benefit from a substantial satellite data quota made available with financial support by the European Commission.

### **GMES Masters 2012 call for proposals**

The GMES Masters rewards on an annual basis the best ideas for services, business cases and applications based on GMES data, with the aim to foster product development and entrepreneurship in Europe. Initiated by the European Space Agency (ESA), the Bavarian Ministry of Economy, the German Aerospace Center (DLR) and T-Systems, and supported by the European Commission and European Space Imaging GmbH, the GMES Masters 2012 will call for proposals between 1 June and 16 September 2012 in six categories.

### **T-Systems Cloud Computing Challenge**

T-Systems will award the prize for its Cloud Computing Challenge to the best GMES application or service idea that will make use of the cloud computing model Infrastructure-as-a-Service (IaaS) to provide Earth observation data on demand via user-oriented web portal or mobile devices. T-Systems will assist the winner in getting the awarded project off the ground. They will support the winner to realise an innovation project, which could lead to a long-term partnership.

### **Challenge to spur the geospatial industry**

The Singapore Land Authority has launched OneMap Challenge that seeks to promote the development of innovative map-based desktop and mobile applications by businesses and the community.

The OneMap Challenge provides a platform for application developers to showcase their creativity through the apps they develop to an increasingly tech-savvy population and enterprises, including those represented by the Association of Small and Medium Enterprises (ASME) which is one of the competition promotion partners. The Challenge also aims to facilitate collaborations between potential business partners for creating location-based apps that are useful for business enterprises and the general community.

With two top prizes of \$20,000 cash each and other attractive prizes up for grabs, the OneMap Challenge is divided into two categories – Web Applications for applications that run on web browsers and Mobile Applications for those that run on smart phones, tablets and other portable devices.

Visit <http://www.sla.gov.sg/OneMapChallenge> to learn more about OneMap Challenge and check out the OneMap Facebook page at [www.facebook.com/OneMap](http://www.facebook.com/OneMap).

Source: Geospatial World and [SLA press release](#)

## Employment Opportunities

### **GIS Job Board Launches New Website: [www.gisjobboard.com](http://www.gisjobboard.com)**

New Site Provides Employers and Job Seekers Tools to Post and Search Jobs and Resumes in the GIS and Geospatial Disciplines

GIS Job Board has launched a new website specifically dedicated to GIS and other geospatial disciplines. The new site makes it simple for employers and job seekers to post and search for jobs and resumes. The site was created to serve the growing needs of the GIS community and help with recruiting and job seeking efforts.

Visitors also have the option to view the site in a different language if they choose, making it easier for them to have access to the content

Registered users can receive jobs or resumes by email. They can also flag jobs and resumes as well as save searches, setup resume alerts, and save resumes and jobs. Users have the capability of private messaging other users in case they ever want to communicate with someone.

For more information about GIS Job Board, please visit their website at [www.gisjobboard.com](http://www.gisjobboard.com)

[Back to contents](#)

## Conference Proceedings



### **FIG Working Week 2012 Rome May 6 – 10, 2012** [Technical Program and Proceedings](#)

### **GSDI 13 QUEBEC CONFERENCE A HUGE SUCCESS**

**May 14 – 7, 2012**

A limited-edition book of selected papers "Spatially Enabling Government, Industry and Citizens: Research and Development Perspectives" was provided free of charge to all conference registrants. Abstracts and Papers from the Conference may also be downloaded from the [GSDI Association's website](#).

### **[Report on GI Science and Remote Sensing for Climate Change Studies Workshop](#)**

Kumaun University SSJ Campus Almora, India from 1-3 March 2012.

### **Malaysia Geospatial Forum 2012**

[Day 1](#) (March 6), [Day 2](#) (March 7), [Plenary showcases g-tech in nation building](#)

### **[Possibility or a dream? Spatially Enabled Government and Societies](#)**

Geospatial experts from different background and part of the world share their views on Spatially Enabled Government and Society (SEGS) at **UNRCC-PCGIAP International Symposium** organized by Department of Surveying and Mapping Malaysia during **15 – 16 February at Kuala Lumpur, Malaysia**. They highlight pertinent issues, challenges and suggest way forward to achieve the goal

### **[Timor Leste \(East Timor\) – environmental data review workshop](#)**

The 6th of March as part of the Norwegian Petroleum Assistance Program together with DNMA I contributed to a workshop to be held at the Arbiru Hotel in Dili, Timor Leste. The intended outcome was to contribute to a process for establishing better handling of environmental data. The workshop was opened by his Excellency Sr. Abilio de Deus de Jesus Lima, State Secretary for the Environment.

### **[Iraq Spatial Data Infrastructure workshop completed](#)**

In mid-February 2012, over 25 persons representing 13 national and regional government organizations assembled in Erbil in the north of Iraq for an intensive three-day exchange to explore concepts and ideas towards the establishment of a National Spatial Data Infrastructure for Iraq.

The workshop was conducted under the auspices of the Prime Minister Advisory Committee (PMAC), and supported by the United States Geologic Survey (USGS).

Staff from the GPC Group facilitated the workshop, bringing experience and insights regarding the implementation of GIS federations and Spatial Data Infrastructure (SDI) in other countries and regions around the world.

[Back to contents](#)

Open Planet 5, the magazine published for the [International gvSIG Conference](#) is now available in electronic format

### [National Geomatic Plan in Gabon: results of pilot projects presented](#)

IGN France International presented the main results of the work conducted between April and December, 2011 at the occasion of a final seminar. This seminar was held on December 6th, 2011 in Libreville and brought together around 60 representatives, most of whom were general managers and permanent secretaries from the main ministries, all in the presence of Emmanuel Issozet, Minister of the Budget and Madame Yolande Nyonda, Permanent Secretary of the Budget.

[Phase pilote du PNG Gabon : Promesses tenues](#)

[NGP Gabon: IGN France International presented the results of the pilot projects during a final seminar](#)

[Back to contents](#)

## Conferences, Events

For upcoming events of global or major international interest, please visit the [upcoming conference list](#) on the GSDI website – as this conference list will be reserved for conferences within or with specific interest to the Asia Pacific Region.

**The editors welcome news of conferences & events from the newsletter subscribers**

### [Call for Expression of Interest to host AARSE 2014 and future Conferences](#)

Call for Expression of Interest to host the 10th biennial International Conference of the African Association of Remote Sensing of the Environment (AARSE) in October 2014 and future Conferences. The 9th conference will be held in Morocco in October 2012.

Date	Location	Event
<b>July 2012</b>		
8-11 July	Brisbane, Australia	<a href="#">2012 Brisbane International Geospatial Forum</a>
<b>16-20 July</b>	Universiti Teknologi Malaysia, Johor Bahru, Malaysia	<p><a href="#">AGSE 2012 - Applied Geoinformatics for Society and Environment</a>  <b>Conference Theme: "Geoinformation - Catalyst for planning, development and good governance"</b>  <a href="#">Contact</a></p> <p>AGSE 2012 is an interdisciplinary, international forum for sharing knowledge about the application of Geoinformatics with focus on application and on developing countries.</p> <p>Workshops planned so far:</p> <ul style="list-style-type: none"> <li>- Spatial Analysis with Open Source - gvSIG and SEXTANTE (D. Schröder, HFT Stuttgart, Germany)</li> <li>- ILWIS - advanced topics (Md. Zahid Hasan Siddique, Institute of Water Modelling, Dhaka, Bangladesh)</li> <li>- Raster based analysis using R statistical software (S. Pareeth, International Water Management Institute, Colombo, Sri Lanka)</li> <li>- Python in three hours (V. Wendlik, HFT Stuttgart, Germany)</li> <li>- Implementing OGC conformant webservice using PostGIS and GeoServer (R. Kettemann, HFT Stuttgart, Germany)</li> <li>- Application of MODIS 1 km LST product for characterisation of UHI (Arathyram R.S,m National Remote Sensing Center,ISRO Hyderabad)</li> <li>- An Introduction to Ecological Niche Modelling Using DIVA GIS (Sooraj N P, MSc.MPhil, Activ Environmental Services, Cochin)</li> <li>- Strategic process management for introducing GIS (F.-J. Behr, HFT Stuttgart, Germany)</li> </ul>


[Back to contents](#)

		- Fuzzy logic analysis (Pulsani Reddy, India)								
23-27 July	San Diego, USA	<p><b>Esri International User Conference</b>  <b>Now Accepting Presentation Submissions</b>          Participation from the GIS community makes the Esri International User Conference (Esri UC) &lt; <a href="http://www.esri.com/events/user-conference/index.html">http://www.esri.com/events/user-conference/index.html</a> &gt; much more than just another technology user conference. It's a place to collaborate with your colleagues and get inspired by their work.</p> <p>What do you know that could help others make the most of ArcGIS? Here's your chance to share tips, strategies, and accomplishments with fellow GIS professionals. Both new and seasoned ArcGIS users are encouraged to submit presentation abstracts for consideration. Of particular interest are proposals related to:</p> <ul style="list-style-type: none"> <li>• Applying ArcGIS to new problems in innovative ways</li> <li>• Leveraging new capabilities of ArcGIS 10</li> <li>• Extending your GIS to a broader audience through web and mobile applications</li> <li>• Driving GIS advancements in your industry</li> <li>• Collaborating inside and outside your organization to increase efficiency, share data, and maximize geospatial resources</li> </ul> <p>Review the <a href="#">session topics</a> to see how your contribution can fit into this year's agenda.</p> <p><b>Abstract submission deadline:</b> passed.</p>								
<b>August 2012</b>										
6 – 8 August	Melbourne, Australia	<p><b>GITA 2012</b> – GITA 17th Annual Geospatial Solutions Conference          “From Fundamentals to the Future – Managing Assets Spatially”  <b>Important dates</b></p> <table border="1"> <tr> <td>30 March 2012</td> <td>Abstract submission closes</td> </tr> <tr> <td>late April 2012</td> <td>Authors notified of initial acceptance or otherwise; successful authors invited to submit a full paper</td> </tr> <tr> <td>5 March 2012</td> <td>Registration opens</td> </tr> <tr> <td>31 May 2012</td> <td>Deadline for authors to register for the meeting</td> </tr> </table> <p><a href="#">Contact</a></p>	30 March 2012	Abstract submission closes	late April 2012	Authors notified of initial acceptance or otherwise; successful authors invited to submit a full paper	5 March 2012	Registration opens	31 May 2012	Deadline for authors to register for the meeting
30 March 2012	Abstract submission closes									
late April 2012	Authors notified of initial acceptance or otherwise; successful authors invited to submit a full paper									
5 March 2012	Registration opens									
31 May 2012	Deadline for authors to register for the meeting									
25 August – 1 September	Melbourne, Australia	<p><b><a href="#">XXII International Society for Photogrammetry &amp; Remote Sensing Congress</a></b>          Email: <a href="mailto:jsprs2012@icms.com.au">jsprs2012@icms.com.au</a></p>								
<b>September 2012</b>										
2-4 September	Wellington, New Zealand	<p><b><a href="#">The 4th Digital Earth Summit focusing on “Natural Disasters”</a></b>  <b>Call for Papers</b> (<i>Deadline for abstracts submission: 15 June 2012</i>)</p>								
4-5 September  “NEW”		<p><b><a href="#">FOURTH OPEN SOURCE GIS CONFERENCE - OSGIS 2012</a></b>          Nottingham Geospatial Institute, University of Nottingham          OSGIS 2012</p>								
6-8 September	Tokyo, Japan	<p>2012 International Conference for OpenStreetMap (OSM)  <b><a href="#">State of the Map 2012 (SoTM12)</a></b></p>								
9-14 September	Ticino, Switzerland	<p><b><a href="#">11th NCCR Climate Summer School, 2012</a></b>          The NCCR Climate, Switzerland's Centre of Excellence in Climate and Climate Impact Research, invites young scientists to join leading climate researchers in a scenic southern Swiss Alpine setting on the occasion of the 11th International NCCR Climate Summer School 2012.</p> <p><b>Deadline for applications:</b> closed. Successful applicants will be notified in February 2012. Detailed information and the application form are available at</p>								



		<a href="http://www.nccr-climate.unibe.ch/summer_school/2012/">http://www.nccr-climate.unibe.ch/summer_school/2012/</a> . Contact: University of Bern, NCCR Climate Management Centre, Zähringerstrasse 25, CH-3012 Bern, Switzerland, mailto: <a href="mailto:nccr-climate@oeschger.unibe.ch">nccr-climate@oeschger.unibe.ch</a> Telephone +41 31 631 31 45, Telefax +41 31 631 43 38.
<b>17–9 September</b>	Hanoi, Vietnam	<a href="#">11th Asia Geospatial Forum</a> <b>Abstract submission deadline 30 June, 2012</b> <a href="#">Contact</a>
<b>18-21 September</b>	Kashi, Xinjiang, China	<a href="#">The International Symposium on Earth Observation for Arid and Semi-Arid Environments</a> (ISEO 2012) with the theme of "Earth Observation Illuminating Central Asia".
<b>20-1 September "NEW"</b>	Ulaanbaatar, Mongolia	<a href="#">Asia GIS 2012 International Conference</a> Abstract submission deadline: July 16, 2012
<b>October 2012</b>		
<b>2-4 October –</b>	Gauteng, South Africa	Call for papers for the peer-reviewed academic track of <a href="#">GISSA Ukubuzana 2012</a> <b>Conference theme:</b> 'An African Dialogue: Geomatics for Infrastructure Development and Service Delivery' Authors are invited to submit full-text academic papers, approximately 5000 words in length and relevant to the themes and subject matter of the conference, for the peer-reviewed academic track at the GISSA Ukubuzana 2012 conference. <b>Important dates</b> <ul style="list-style-type: none"> <li>• 30 June 2012: Submission of full papers for peer-review for academic track</li> <li>• 13 August 2012: Notification of acceptance of papers for academic track</li> <li>• 10 September 2012: Submission of revised peer-reviewed full papers for academic track</li> <li>• 17 September 2012: Registration of presenters of accepted papers for academic track</li> <li>• 25 September 2012: Submission of PowerPoint presentations for conference CD</li> <li>• 2-4 October 2012: GISSA Ukubuzana 2012 in Kempton Park, Gauteng, South Africa</li> </ul> <a href="#">Instructions to authors of peer-reviewed academic papers.</a> <a href="#">Conference brochure</a> (1 MB pdf)
<b>24-26 October</b>	Beijing	<a href="#">The 4th International Conference on Remote Sensing in Archaeology</a> (ICRSA4) with the theme: "New Era of Earth Observation on Natural and Cultural Heritage".
<b>29 October – 2 November</b>	El Jadida, Morocco	<a href="#">10th biennial International Conference of the African Association of Remote Sensing of the Environment (AARSE)</a>
<b>29 October – 2 November</b>	El Jadida, Morocco	<a href="#">AARSE 2012 Conference: Call for Side-event Workshops</a> As you might be aware the <a href="#">AARSE 2012 Conference</a> will take place from October 29 to November 2, 2012 in El Jadida, Morocco. This 9th holding of the AARSE Conference represents a major event in the long series of internationally recognized AARSE conferences. <b>Note:</b> Please be aware that the following policy of the AARSE Executive Council on workshops organized by other parties applies: - Organizers of a pre-/concurrent-/post-conference workshop must pay a fixed amount of €3000 to cover expenses for projector, venue, writing materials and microphone. Anything extra is to be borne by the workshop organizer. However, organizers of a pre-/concurrent-/post-conference workshop who pay the conference registration fee for 8 of their participants, 2 months prior to the conference date, pay a fixed amount of €1500 to cover costs of projector, venue, writing materials and microphone. Abstract submission <b>CLOSED</b> 30 April 2012

[Back to contents](#)

		<p><b>AARSE AWARDS</b> - All presenters are invited and encouraged to enter the AARSE award-winning competition for best paper presentation and best poster.</p> <p><b>IEEE GRSS/AARSE TRAVEL FELLOWSHIPS</b> - To support travel costs, accommodation and registration fees to attend conferences of the two societies in the field of Earth observation by remote sensing. The beneficiaries of these conference fellowships shall be African scientists or students who have their paper accepted for oral or poster presentation at the AARSE biennial conference.</p>
<b>November 2012</b>		
<b>20-2 November</b>	Canberra, Australia	<p><a href="#">spatial@gov@ Conference and Exhibition 2012</a>          Call for Papers - Deadline for Submissions: 5pm Tuesday 7th August 2012 - <a href="#">Contact</a></p>
<b>“NEW”</b>		
<b>February 2013</b>		
<b>11-3 February</b>	Denver, USA	<p><a href="#">International LiDAR Mapping Forum (ILMF)</a>  <a href="#">Call for Papers</a> and invites any interested parties to submit their abstracts by September 28, 2012 online. <a href="#">Contact</a></p>
<b>“NEW”</b>		
<b>April 2013</b>		
<b>22-26 April</b>	Beijing, China	<p><a href="#">35th International Symposium on Remote Sensing of Environment (ISRSE35)</a>  <b>ABSTRACT SUBMISSION</b>          Interested contributors should submit a summary of the paper they propose for presentation.</p> <ul style="list-style-type: none"> <li>• All submissions should be in English.</li> <li>• Abstracts should reach the Technical Programme Committee no later than 30 September 2012.</li> <li>• Notification of paper acceptance will be made by 10 December 2012.</li> <li>• Each presenting author will be required to register and pay by the author registration deadline on Monday, 25 February 2013, to ensure their abstract is included in the final programme.</li> <li>• Please submit abstracts through the Abstract Submission link at <a href="http://www.isrse35.org">http://www.isrse35.org</a></li> <li>• All abstracts must be submitted online.</li> </ul> <p><b>IMPORTANT DATES:</b>          Registration Opens: Monday, 10 September 2012  <b>Abstract Submission Deadline:</b> Sunday, 30 September 2012  <b>Workshop Submission Deadline:</b> Tuesday, 30 October 2012          Acceptance Notification Monday, 10 December 2012  <b>Early-bird Registration Deadline:</b> Friday, 25 January 2013  <b>Final Paper Deadline:</b> Friday, 15 February 2013  <b>Author Registration Deadline:</b> Monday, 25 February 2013          Standard Registration Deadline Monday, 15 April 2013          Contact detail:          ISRSE35 Secretariat          E-Mail: <a href="mailto:isrse35@ceode.ac.cn">isrse35@ceode.ac.cn</a>          Tel: +86 10 8217 8969          Fax: +86 10 8217 8968          Website: <a href="http://www.isrse35.org">www.isrse35.org</a>          Address: Center for Earth Observation and Digital Earth, CAS No. 9 Dengzhuang South Road, Haidian District, Beijing 100094, P.R. China</p>
<b>“NEW”</b>		
<b>August 2013</b>		
<b>26-29 August</b>	Kuching, Sarawak, Malaysia	<p><a href="#">The 8th International Symposium on Digital Earth (ISDE8)</a> with the theme of “Transforming Knowledge into Sustainable Practice” will be held in Kuching, Sarawak, Malaysia.</p>

[Back to contents](#)

2014		
	Malaysia	Malaysia will be hosting the (International Federation of Surveyors) FIG Congress in 2014. The decision was taken at the recently concluded FIG Congress 2010 in Sydney, Australia.

To subscribe to SDI-AP, please do so [online](#). To contact please [email](#) the editors.  
[Global Spatial Data Infrastructure Association](#).

Please mention SDI-AP as a source of information in any correspondence you may have about items in this issue.

**DISCLAIMER:** The Editor and Web Host will not be held liable for any errors, mistakes, misprints or incorrect information.

Copyright © 2011. All rights reserved.

