

Spatial Data Infrastructure – Asia and the Pacific (SDI-AP) is a free electronic newsletter from the [Global Spatial Data Infrastructure Association \(GSDI\)](#) which is available in both English and Chinese language versions. The newsletter is produced for people interested in Spatial Data Infrastructure, GIS, remote sensing and geospatial data issues in Asia and the Pacific. It aims to raise awareness and provide useful information to strengthen SDI initiatives and support synchronising these activities across the region. Support for the newsletter is also provided by the [Permanent Committee on Geographic Information for Asia and the Pacific \(PCGIAP\)](#), a regional forum to enhance cooperation in the development of a regional geographic information infrastructure. The newsletter is currently being produced for GSDI by the [Centre for Spatial Data Infrastructures and Land Administration](#) at the University of Melbourne.



To subscribe to SDI-AP use [this link](#). Back issues of the newsletter are at the [GSDI website](#). You can also sign up for [GSDI News List](#) to receive alerts of special news and announcements as well as notification of new issues of the SDI-AP newsletter. To subscribe and access archives of thematic or regional discussion lists [please visit](#).

Contents

Message from the editors	1
Contributions.....	1
GSDI News	2
SDI News, Links, Papers, Presentations.....	2
GIS Tools, Software, Data.....	3
News from abroad	8
Articles	9
Books and Journals (including Videos and Web publications).....	10
Just for Fun!.....	11
Training Opportunities	12
Employment Opportunities	13
Conference Proceedings	13
Conferences, Events	13

Message from the editors

Welcome to the April issue of the newsletter. In this edition we would like congratulate the recipients of the GSDI Small Grants Program.

If you have news or information related to SDI, GIS, RS or spatial data that you would like to share with the community (e.g. workshop announcements, publications, reports, websites of interest etc.), kindly [send us](#) the materials by the 25th of the each month for your contribution to be included in the next newsletter.

Malcolm Park and Serryn Eagleson ([Editors](#)), at the [Centre for Spatial Data Infrastructures and Land Administration](#), The University of Melbourne.

Contributions

Thank you to the following people and organisations for their contributions to this issue: Kate Lance, and Baek Wonkug for news feeds, Jeremy Shen and Bruce Lan and colleagues for the Chinese translation as well as Shivani Lal, *GIS Development*, *GeoSpatial World* and *Asia Surveying & Mapping* magazine for directly contributing to the newsletter.

[Back to contents](#)

GSDI News

GSDI Small Grants Awards announced

The Global Spatial Data Infrastructure (GSDI) Small Grants Program sponsored by the U.S. Federal Geographic Data Committee (FGDC) and the URISA GISCorps has made its awards for the 2010-11 program. Congratulations to all award recipients in particular the following projects located in the Asia Pacific Region:

Indonesia - Tailor-Made SDI Workshop & Training: Use of GeoPortal for Integrating Community Data and SDI Layers in Support of Collaborative Efforts in Urban Disaster Reduction in Yogyakarta, Indonesia

POC: Gadjah Mada University; Dr. Trias Aditya

Kyrgyz Republic - SDI Awareness Training – Central Asia (SDIaware.CA)

POC: Kyrgyz GIS Association (KgGISA); Dr. Ainura B. Nazarkulova

India - Ecologically Sensitive Areas (ESA) of Western Ghats of India-Capacity Building for stake holders for developing Spatial Data Infrastructure (SDI)

POC: Open Source Geospatial - India (OSGeo-India); Santosh Gaikwad

Philippines - Workshop for the Harmonization of Spatial Data Infrastructure and Application to the Ancestral Domain Database Information System

POC: Ancestral Domains Office, National Commission of Indigenous Peoples (NCIP); Director Myrna Caoagas

These projects will support spatial data infrastructure within the Asia/Pacific Region. More information is posted on the [GSDI Small Grants Program Web](#) page.

[Back to contents](#)

SDI News, Links, Papers, Presentations

Delhi Geo-spatial Data Infrastructure Bill, 2011

Speaking in the Assembly, Chief Minister Sheila Dikshit said Delhi is the first state to enact such an important Act. Ms Dikshit said the Delhi State Spatial Data Infrastructure (DSSI) project is one of the flagship projects of the city government, launched to frame and implement policies for issues related to geo-spatial data.

The DSSDI was approved by the Cabinet on November 13, 2010 and the project was awarded to the Survey of India for execution. ... The Bill aims at creating, updating, managing, disseminating and sharing for Delhi a geo-spatial map, geo-spatial system, geospatial application and geo-spatial portal which will serve as a base for planning and executing various development projects and utility services to be undertaken by various departments, corporations, boards, local bodies, public authorities and public and private agencies to achieve goals of coordinated planning, effective governance, public welfare in the city. Under the project, it was conceived to have a common and integrated Geographic Information System.

Source: [NewKerala.com](#) and Asian Surveying and Mapping Magazine

Transport Abu Dhabi | The Municipal System Receives Excellence Awards For GIS Implementation

The Land, Property Regulations, and Registration Division – Land and Property Management Sector at the DMA, presented a paper highlighting its accomplishments in GIS data pity by building a centralized Municipal Spatial Solutions Infrastructure (MSSI) and familiar spatial data specifications, in add-on to unifying the Addressing System in the Abu Dhabi Emirate. These accomplishments were completed by auxiliary with the Spatial Data Center in Abu Dhabi and coordinating with the municipalities of Abu Dhabi, Al Ain, and the Western Region.

Source: [Recruiters in Dubi](#)

The third episode of the Geospatial Revolution Project has been released

The latest episode focuses on geospatial intelligence and crime analysis. The first segment entitled “Mapping the Road to Peace” looks at the use of PowerScene to create a peaceful division of former Yugoslavia that would be acceptable to Croats, Bosnians and Serbs. The software was used to delineate Muslim-Croat territory and Serb territory. PowerScene was also used to solve the tricky problem of developing a corridor to connect the muslim enclave of Goradze with the rest of by the Muslim-Croat territory. By combining satellite images, aerial photographs, maps, topographical data with flyover capabilities, PowerScene was used to convince Milan Milosevic to accept the delineated corridor. The second segment looks at the use of geospatial technology in

[Back to contents](#)

modern warfare, looking not just at spatial analysis in combat but also the humane geography uses of the military. The third segment focuses on crime analysis including hot spot analysis and parolee GPS tracking. The fourth and final segment takes an alarmist look at the use of geospatial technology to illicitly track individuals and reminds individuals to be aware of those dangers.

Fourth episode due for release on May 3.

Source: GIS Lounge [Thanks to Wonkug Baek for this item]

China Information Technology Announce Contract Wins Worth \$3.3

Geographic information systems software provider China Information Technology Inc. (CNIT: [News](#)) Monday said it received contracts worth \$3.3 million to provide its core digital public security technology, or DPST, and geographic information systems, or GIS, solutions.

The contracts secured include agreements to supply Police-use GIS and PDA equipment for the Shenzhen City Traffic Police Mobile Law-enforcement System, install Police-use GIS platform in Jiaozuo and Hebi City of Henan Province under China's National PGIS Standardization Project, and build a First Responder Coordination System for Anxi City of Fujian Province.

Source: [RTTN News](#)

Layers of Asia – A GIS Journey through our world

Take a virtual journey to Asia and see how GIS technology opens doors of understanding to the vast and complicated Asian continent by watching Layers of Asia A GIS Journey Through Our World. This video is a great resource for your next GIS Day event. Visit India to see how geography and climate have influenced history, visit the Himalayas to see how mountain climbers use GIS to plan routes, and visit China to see how mega cities will emerge in the 21st century.

Source: [GISDayTV](#) (First published in 2009 uploaded to the Internet 27 Feb 2011)

gvSIG at the ELOGeo project

After the signing of the Collaboration Agreement with Centre for Geospatial Science, the University of Nottingham, the gvSIG Association collaborates with the ELOGeo project (An e-Learning Framework for Using Geospatial Open Data, Open Source and Open Standards) by providing English training documentation about gvSIG.

The ELOGeo project is a JISC-funded project based at the Centre for Geospatial Science, the University of Nottingham in partnership with the Mimas Centre of Excellence at the University of Manchester.

This project addresses the provision of infrastructure for education, transfer of knowledge and training users and researchers on the effective use of open geospatial services, by providing a set of methodologies, tools and materials.

The courses target the researchers, non-geospatial experts and general public who want to use open data, standards and tools.

For more information about the project, please visit the [webpage](#) of the project.

Please contact [Dr Amir Pourabdollah](#) for any information needed.

[Back to contents](#)

GIS Tools, Software, Data

Japan's Earthquake and Tsunami

The Reliability of Tsunami Detection Buoys

The technology helped after Japan's earthquake, but the buoy system is often unreliable.

How Japan's Earthquake and Tsunami Warning Systems Work

The earthquake that struck Japan in March was the worst seen in that country for over 300 years (with a local magnitude of 8.9). Hundreds have been killed and injured so far, but the loss of life was likely limited by two vital early warning technologies: a new earthquake alert system, and ocean-based tsunami warning system.

Source: MIT Technology Review



[Back to contents](#)

[NASA Image: GOES-11 Satellite Sees Pacific Ocean Basin After Japan Quake](#)

The GOES-11 satellite captured a stunning image of the Pacific Ocean as tsunami-generated waves move through the ocean basin. The waves were generated from the recent earthquake near Japan.

Source: www.SpaceRef.com

[ERDAS Offers Japan Imagery as Public Service](#)

ERDAS is providing access to datasets that illustrate the devastation in Japan after the 9.0 magnitude earthquake and the subsequent tsunami on March 11, 2011.

Source: [GIS User](#)



[Before and after images of Minamisanrikucho](#) using a slide bar at:

<http://demo.erdas.com.au/WebExamples/IWS/jquery/swipe/japan.html>

Source: ERDAS

[A Japan Trends Map is now available from ESRI](#)

The map visualizes a heat map of aggregated reports or reports categorized by property damage, hazards, evacuations, power outages, or help/services available

Source: ESRI

[US Army Geospatial Center Supports Japan Quake, Tsunami Relief Efforts](#)

Source: GIS User

[Korean Peninsula moved 5 cm east by Japan quake](#)

According to the Korea Astronomy and Space Science Institute (KASI), the Korean Peninsula has moved five centimetres to the east due to the massive quake that rocked Japan. After analysing GPS data, KASI claimed that the peninsula moved between 1 cm to 5 cm depending on the location, with Ulleung Island and nearby Dokdo islets in the East Sea being most affected. The south-western part of the country and Jeju Island off the peninsula's southern coast moved far less. Ulleung and Dokdo are the closest South Korean territories to the epicentre of the 9.0 magnitude tremor that devastated the north-eastern part of Honshu Island. The epicentre was located 130 kilometres east of Sendai city under the Pacific Ocean.

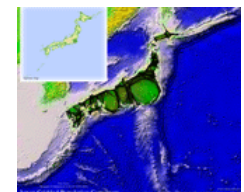
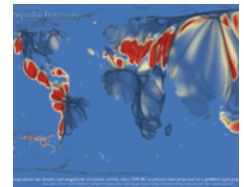
Source: The Hindu [Thanks to Wonkug Baek for this item]

[World Earthquake Intensity Map](#)

A map, which provides a general representation of the risks of earthquakes on humanity using records from the past 4,000 years, has been produced by Benjamin Hennig, a

postgraduate researcher from the University of Sheffield. The new World Earthquake Intensity Map has been created on an equal-population map and allows us to understand the earthquake intensity in relation to today's population distribution, giving an idea of where most people are at risk in regards to seismic activity. It provides a visualisation of all major earthquakes that have been compiled in the Global Significant Earthquake Database. The database contains information on destructive earthquakes from 2150 BC to the present day that meet at least one of the following criteria: moderate damage (approximately \$1 million or more), 10 or more deaths, magnitude 7.5 or greater, modified Mercalli intensity X or greater, or the earthquake generated a tsunami. The map was created using these records by calculating 'kernel density', an equation that shows the probability distribution of earthquakes, in order to visualise the areas most at risk from 2150 BC to the present day.

Source: University of Sheffield [Thanks to Wonkug Baek for this item]



[Geophysical Activity Leads to Geospatial Technology Use](#)

Geophysical activity around the globe results in a need to monitor the earth's physical activity closely. Earthquakes, volcanoes and geological investigations are all monitored so internal and surface activities can be studied, understood and even modeled. Recent earthquakes in Christchurch, New Zealand and Japan have led to the use of geospatial tools and technologies. In other parts of the world, volcanoes are leading to the development of aeronautical changes and spatial management strategies

Source: Asian Surveying and Mapping

[Back to contents](#)

[What Are the Implications of Earthquake Displacement?](#)

News from the [Geospatial Information Authority of Japan](#) (GSI) confirms that the 9.0 magnitude Tohoku earthquake caused a severe horizontal displacement. Japan's GPS Earth Observation Network System (GEONET), which has 1,200 permanent monitoring stations, has provided a detailed view of between a 6 and 28 meter shift along two fault blocks totaling 400 kilometers long.

Source: Asian Surveying and Mapping

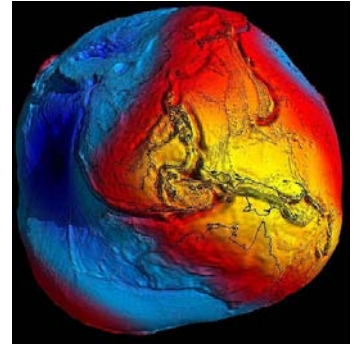
[Gravity's impact on Earth revealed in brilliant colour](#)

Scientists believe images from space could reveal important details about gravity's impact on Earth.

A European spacecraft has mapped the Earth's gravity with unrivalled precision - a feat that may ultimately help scientists predict earthquakes.

It maps the Earth's gravitational pulls as it orbits, recording its position with GPS and measuring the gravity in 3D accurate to one part in ten million million.

Source: The Melbourne Age



[South Australia to enhance LIS](#)

The South Australian Government has entered into an eight-year agreement with Salmat, a call centre specialist, to deliver a land information management system within three years.

Source: Geospatial World Weekly

[Mapping Shacks and Slums Helps Reduce Poverty](#)

The benefits of mapping the informal settlement in slums has a large number of benefits. Detailing the settlement patterns allow for municipalities to provide services, such as water, sewer service and electricity. Mapping of slums provides the first step toward land governance, recognizing investments, allowing for land to be used as collateral to help bring the populations out of poverty. The mapping of the land also provides the means for setting up property taxes to offset new services.

Source: Asian Surveying & Mapping

[GPS over-reliance driving us toward catastrophe: experts](#)

It is an issue that many law enforcement agencies and governments don't want to discuss, according to Professor Andrew Dempster, a specialist in satellite navigation signal processing and receiver design. The problem? Australia and the world's reliance on global navigation satellite systems (GNSS), commonly known to many as GPS, and its vulnerability to be deliberately jammed or unintentionally interfered with.

Source: Melbourne Age

See also - [Technology Could Back Up GPS, Defeat Jammers](#)

Experts met at the Global Navigation Satellite Systems (GNSS) Interference, Detection and Monitoring Conference 2011 in London to discuss this issue, following a report from the Royal Academy of Engineering which laid out the risks of GPS disruption. eLORAN (Enhanced Long Range Navigation) was among the most actively discussed solutions to GPS jamming.

Source: V1 Magazine

[Human behavior, geodata collection, and sharing: Two stories](#)

Summary: When we think of geodata collection and data sharing challenges the first thing that comes to mind may be "policy." But maybe something else should: "human behavior." Executive Editor Adena Schutzberg looks at her own behavior and her neighbors' during a cold and snowy few weeks outside of Boston for some insight.

Source: Directions Magazine & thanks to Kate Lance for bringing it to our attention

[Intelligent Cities](#)

TIME magazine explores the evolving, deep-rooted connections between technology and ever expanding cities — from education and energy to government, health care and transportation.

Source: Time Magazine



[The world of predictive modelling](#)

[Back to contents](#)

[Online Map Games To Encourage and Engage Your Geographic Awareness](#) by Gretchen Peterson

This article showcases some of the interactive maps that are scattered around the Web. ... However, they are simple games that everyone can play to increase their geographic awareness.

Source: GIS User

[Seoul upgrades GIS Portal](#)

Seoul, the capital of South Korea, has upgraded the city's GIS portal to better support the growing number of foreign tourists and students in the bustling metropolis. In an effort to boost tourism in the country's capital, the city government strengthened the foreign language support in the city's GIS portal. The upgraded GIS portal system now boasts of multi-lingual location-based services available in Korean, English, Japanese, and Chinese languages which would provide information on 19 cultural sites, walking tour programs in Seoul, and video streams of the city's many tourist attractions. The recent upgrade of the GIS portal would enable tourists to maximise their visit and bask in Seoul's rich cultural heritage. The GIS portal would offer maps and detailed location-related information about cultural sites where foreign tourists can learn about Korea's customs and traditions and enjoy authentic traditional delicacies. Official tourism statistics show a consistent upward trend of foreign tourists in South Korea. Foreign tourist arrivals exceeded 7 million, with Japanese tourists accounting nearly 40 per cent or 2.75 million, followed by Chinese tourists at 1.22 million, and Americans at 550,000. The English version of Seoul's GIS Portal can be visited through the [link](#).

Source: www.futuregov.asia [Thanks to Wonkug Baek for this item]

[GPS power for Australian public transport info](#)

The next generation TransLink mobile website will include Journey Planner easy travel, featuring a GPS capability that allows customers to search for stops, go card retailers and journeys near their current location.

Source: Geospatial World Weekly

[Cadastre and Cadastral Survey History of Hong Kong](#)

Hong Kong has a long history of mapping and surveying since the beginning of the colony. This history dates back as far as the Qin (221-206 B.C.) and Han (206 B.C. - 220 A.D.) dynasties. Initial land divisions began on Hong Kong Island and would later extend to the New Territories. Since the current land area was returned to Chinese control, the land administration and cadastre survey have continued

Source: Asian Surveying and Mapping



[Manila Observatory joins Asia disaster management project](#)

A Japan-led regional project that seeks to use remote sensing and GIS technologies in disaster management has named the Manila Observatory as a Data Analysis Node (DAN) in Asia Pacific. The Philippine Disaster Science Management Center (DSMC), along with the Congressional Commission on Science Technology and Engineering (Comste), said the Manila Observatory will now play a major role in supplying data to Sentinel Asia, an international project of the Japan Aerospace Exploration Agency (JAXA). Sentinel Asia aims to support disaster management in the Asia Pacific region by applying and promoting remote sensing and GIS technologies among its partners. As a Data Analysis Node, the Manila Observatory will provide analysis and interpretation of satellite data in aid of disaster management in the Philippines and the Asia Pacific region. The Manila Observatory maintains research programs in geomatics, regional climate systems, solid earth dynamics, space weather and air quality. The Observatory also promotes the advancement of science-based decision support systems in aid of climate change mitigation, adaptation, and disaster risk reduction.

Source: www.newsbytes.ph [Thanks to Wonkug Baek for this item]

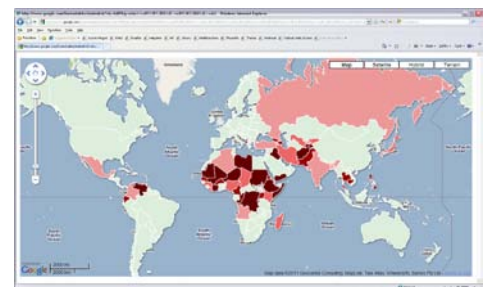
[Cloud mapping by the Guardian](#)

One of the great benefits of Google Fusion Tables is the possibility to merge data from multiple tables. The Guardian Datablog is showing [an example](#) of how you can combine your data with the Natural Earth tables presented in the last thematic mapping blog [post](#).

The Guardian is combining their [travel advice table](#) with one of thematic mapping's [Natural Earth tables](#) to create a [merged table](#). This table is then used to create a choropleth map showing where in the world it's safe to travel (darker colours are countries with stronger warnings):

The map is created with the build-in mapping capabilities of Fusion Tables.

Source: Thematic Mapping blog



[Back to contents](#)

[India strives to fine-tune coastline core projects](#)

India has decided to assess the carrying capacity of India's coastline before allowing multi-sector industries to come up along the coast.

Source: Geospatial World Weekly

[GNSS for Safe Food Production Systems](#)

The occurrence of radiation within the Japanese food supply is raising concern for both local and international consumers of food products from impacted areas - and even those areas that are completely safe. Accurate information about the food and water supply is needed so people can make informed decisions and public agencies can properly communicate with the public and those with vested interests. GNSS technologies can help by providing accurate location details from field surveys and infrastructure

Source: Asian Surveying and Mapping

[Philippines to undertake unified mapping project](#)

Philippines is to undertake a unified mapping project, which aims to update the country's topographic map series and would implement a more detailed 1:10,000 map series for an estimated 50 per cent of the country's land mass. According to the Department of Environment and Natural Resources (DENR), Instead of the typical approach wherein different government agencies do their own mapping and GIS initiatives, this effort will pool funds for the acquisition of aerial photography and satellite imagery. DENR Secretary Ramon Paje said that around 80 per cent of planning, decision making and operations in different government agencies are being influenced by locations. He further added that the government uses spatial data for purposes such legislation, policy development, management of resources, environment protection, urban planning, and disaster management, among others. The agency also stressed the importance of using spatial information in government agencies in the country as it would not only improve business processes but could also potentially reduce the loss of lives when used for disaster management and Geohazard mapping given the unique location of the Philippines as an archipelago. The project will be coordinated by the National Mapping and Resource Information Authority which is part of the DENR.

Source: [FutureGov](#) [Thanks to Wonkug Baek for this item]

[Hong Kong prepares 3D spatial database](#)

Hong Kong, is constructing and maintaining a territory-wide 3D spatial database which would include buildings, roads and terrain with positional and height accuracy up to metre level

Source: Geospatial World Weekly

[The Case for Real Estate GIS in China](#)

Summary: This article, by Renmin University of China assistant professor Yao Yongling and graduate student Li Yao, describes a real estate management system developed for the city of Yancheng in the JiangSu Province in China. In order to accommodate the growth in housing and adapt to the increasingly complex ownership register situation, the Yancheng government officially proposed building a real estate GIS at the end of 2008, and completed construction of the system in November 2010. This system involves 420 square kilometers of land, 14 million residents and 26 million data records.

Source: [Directions Magazine](#)

[Delhi Geo-spatial Data Infrastructure Bill, 2011 passed by Assembly](#)

Speaking in the Assembly, Chief Minister Sheila Dikshit said Delhi is the first state to enact such an important Act. Ms Dikshit said the Delhi State Spatial Data Infrastructure (DSSDI) project is one of the flagship projects of the city government, launched to frame and implement policies for issues related to geo-spatial data.

The DSSDI was approved by the Cabinet on November 13, 2010 and the project was awarded to the Survey of India for execution.

In order to provide teeth to implement the project, the Bill has been framed.

Ms Dikshit said the Bill aims at creating, updating, managing, disseminating and sharing for Delhi a geo-spatial data, geo-spatial map, geo-spatial system, geo-spatial application and geo-spatial portal which will serve as a base for planning and executing various development projects and utility services to be undertaken by various departments, corporations, boards, local bodies, public authorities and public and private agencies to achieve goals of coordinated planning, effective governance, public welfare in the city.

Under the project, it was conceived to have a common and integrated Geographic Information System (GIS).

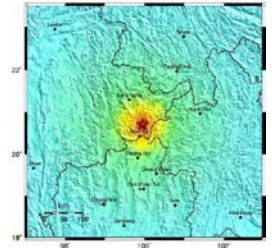
Thanks to Kate Lance for this item.

[Back to contents](#)

[Quake in Myanmar prompts China to map active faults](#)

Two 7.0 magnitude earthquakes struck Myanmar on March 24. Earthquakes struck a relatively rural section of the country that borders on Thailand, Laos, and China. But these back to back disasters, earlier in Japan and now in Myanmar, prompted Chinese government to launch a campaign to map the country's active fault lines.

Source: Geospatial World Weekly



[Back to contents](#)

News from abroad

"This section has been included to highlight some of the developments happening outside the region which demonstrate SDI in action."

[Google offers real-time solution to traffic congestion](#)

Because the shortest distance often is not the fastest way to get around the congested Chicago area, Google Maps Navigation on Monday introduced an update to its driving directions software that uses real-time traffic information to recommend routes.

Google previously generated the route based solely on the shortest mileage to a destination. The revised program taps into conditions on the roads in an attempt to route drivers around the worst backups, officials said. Up to two routings are offered. These would show the mileage and travel times based on actual conditions at the moment, officials said. One might be a shorter distance, while another could be more miles but perhaps a faster trip due to lighter traffic congestion.

Source: Chicago Tribune

Check out LiDAR New's video of the week: [Kinect-based Rescue Bot](#)

The University of Warwick students use the Kinect to develop a rescue robot that can be used to search for people after an earthquake. Microsoft has big plans for the Kinect technology

Source: [LiDAR News, March 2011](#)

[LiDAR Glasses for Blind People](#)

The Saint Mary Academy Robotics Team known as S.M.A.R.T. recently won the state of Rhode Island competition proposing an innovative device to assist blind people – a pair of glasses with LIDAR sensors. ... If the LiDAR glasses detect an object or change in elevation, a signal or voice (like a GPS) would be transmitted to an earpiece attached to the arm of the glasses. Additionally, the glasses would be charged by solar energy, much like calculators.

Source: LiDAR News

[U.S. Drones Fight Mexican Drug Trade](#)

Stepping up its involvement in Mexico's drug war, the Obama administration has begun sending drones deep into Mexican territory to gather intelligence that helps locate major traffickers and follow their networks, according to American and Mexican officials.

Source: New York Times

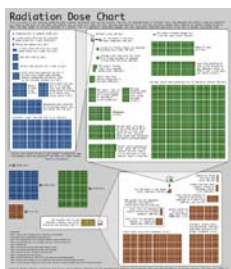
[Canada government launches Open Data Portal](#)

The Government of Canada has launched the pilot project for an online Open Data Portal. Open Data is about offering Government data in a more useful and machine readable formats to enable citizens, the private sector and non-government organizations to leverage it in innovative and value-added ways. The Open Data Portal is a one-stop shop for federal Government data, providing data that can be downloaded free of charge. The portal facilitates access to datasets available on websites to citizens, researchers, voluntary organizations and the private sector. Application developers can reuse and mashup the data from the portal for commercial purposes, research, or community services to benefit all Canadians in a variety of ways. This pilot portal will initially bring together more than 260,000 datasets from the following ten participating departments available to all Canadians: Agriculture and Agri-Food Canada; Citizenship and Immigration Canada; Environment Canada; Department of Finance Canada; Fisheries and Oceans Canada; Library and Archives Canada; Natural Resources Canada; Statistics Canada; Transport Canada; and the Treasury Board Secretariat. The Open Data Portal is available at www.data.gc.ca. The pilot phase will take place over a 12-month period, during which the

[Back to contents](#)

Government will continue to increase the number of datasets available to users and the number of participating departments.

Source: www.tbs-sct.gc.ca [Thanks to Wonkug Baek for this item]



[Nuclear woes and rise of crowdsourced radiation maps](#)

Post devastating earthquake, tsunami, and nuclear crisis posed by Fukushima Nuclear Power Plant, concerned citizens around the globe are searching for ways to keep themselves informed and aware in case of a pending crisis. Hence, they have created several crowd-sourced radiation maps. These maps show threat level in the areas most likely to be affected by a catastrophe: Japan, Asia and the US.

Source: Geospatial World Weekly and [Singularity Hub](#)

[The Far Side of the Moon -- And All the Way Around](#)

A new topographic map of the moon will be released later this year, but a sneak-peek is available now!

Source: NASA



[Austrian authorities release detailed data on Japan radiation](#)

An Austrian institute has released the first specific radiation measurements from the Fukushima leak. One scientist says that radioactive cesium and iodine will likely be similar to that of the Chernobyl accident.

Source: DW-World.DE Deutsche Welle

[Back to contents](#)

Articles

[Defining Accuracies in Mobile LiDAR Surveying](#) by Stephen Clancy

Source: LiDAR News



[Mobile Mapping in southern Chile](#) by Richard Rybka

Source: LiDAR News

[GIS-based model to evaluate low impact development suitability location](#)

by SMR Eslami, HR Fazeli, & A. Mehraban

Abstract

Growing urbanisation is typically associated with increasing storm water runoff and non-point source pollution. Low impact development (LID) has been extended as a new approach for storm water management. LID components are utilised as supplementary to conventional drainage system in urban areas to decrease the runoff and alleviate non-point source pollution from storm water. In this study, a GIS-based fuzzy model base on LID site design criteria and hydrology principals was designed to determine suitability of potential locations for LID practices (especially bioretention) in a specific area. A dynamic rainfall-runoff simulation model (SWWM) was exploited to derive peak flows of links and nodes in the conventional drainage system. Finally, two models were compared to evaluate the accuracy of GIS- based fuzzy model and its criteria.

Source: Geospatial World

[Are We Too Dependent On GPS?](#) by Jeff Thurston

A recently released report in London suggested this past week that society has become too dependent on GPS - the technology that allows us to navigate and perform positioning guidance through the use of satellites. The author seriously wonders whether we have become too dependent on the technology. In fact, one might reasonably argue that society benefits from the satellite-based technology to such an extent that it transforms society and raises quality of life.

Source: Asian Surveying & Mapping

[The effects of spatial population dataset choice on estimates of population at risk of disease](#)

by Andrew J Tatem, Nicholas Campiz, Peter W Gething, Robert W Snow and Catherine Linard

Abstract - The spatial modeling of infectious disease distributions and dynamics is increasingly being undertaken for health services planning and disease control monitoring, implementation, and evaluation. Where

[Back to contents](#)

risks are heterogeneous in space or dependent on person-to-person transmission, spatial data on human population distributions are required to estimate infectious disease risks, burdens, and dynamics. Several different modeled human population distribution datasets are available and widely used, but the disparities among them and the implications for enumerating disease burdens and populations at risk have not been considered systematically. Here, we quantify some of these effects using global estimates of populations at risk (PAR) of *P. falciparum* malaria as an example.

[Is Spatial Thinking Becoming Valued Throughout Higher Education?](#) by Joseph Kerski

Imagine what education would be like if spatial thinking and analysis with geotechnologies was a set of skills and a framework that was valued by others outside of the GIS education community.

There is growing evidence that spatial thinking is becoming valued by those outside of geography in education.

Source: GIS User

[The World of Geographically Referenced Information is Facing a Paradigm Shift](#) by Erik Kjems

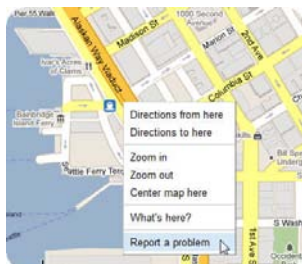
One of the biggest issues or discussion subject within the whole geographic information domain at the moment is the ever-changing demands for handling information in a better and more efficient way. The domain is expanding in all kinds of directions. What remains is geo-referenced information handled with a computer. We are seeing applications and demonstrators showing off in 3D and the wonderful things one can experience here. We are seeing an ever-growing number of applications that handle online information for example traffic or flight control.

Source: Vector 1 media

[SDI framework](#) by Warwick Jones, Micahel Ellyett, & Ngo Duc Mau

The work of building "Spatial Data Infrastructure" (SDI) is in progress all over the world. There are many challenges: governance, organisational, technical, data sharing, transitional and more. Readers may recall that in Feb 2011 issue we have published the first part of the paper. Here we present the concluding part.

Source: Coordinates magazine



[Mapping How To - Reporting Map Errors to Google maps, Bing, Mapquest, OSM, and others data providers](#)

You know the scenario... you browse an online map service for directions or a local search and notice an error or issue with a place of interest (POI), an error with a road segment, or notice some other oddity with the basemap layer. Now what? Luckily most of the major map providers have mechanisms to help users report errors... read on for details.

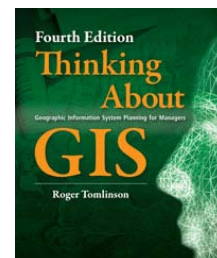
Source: GISuser

[Back to contents](#)

Books and Journals (including Videos and Web publications)

Roger Tomlinson's Updated *Thinking About GIS* Reflects New Technology Trends
Redlands, California—Esri Press has released the fourth edition of [Thinking About GIS: Geographic Information System Planning for Managers](#), the seminal book on planning and implementing a geographic information system (GIS). Roger Tomlinson, widely known as "the father of GIS," has updated this edition to include the latest trends in geospatial technology.

Source: [ESRI](#)



[LiDAR News, Vol 1, No 5](#)

[SERVIR-Africa community news - entries posted in February 2011](#)

[The third episode of the Geospatial Revolution Project has been released](#)

Fourth episode due for release on May 3.

Source: GIS Lounge [Thanks to Wonkug Baek for this item]

[Back to contents](#)

[Russian-English Agricultural Atlas](#)

The Russian-English Agricultural Atlas is the world's most comprehensive source of information on the geographic distribution of plant-based agriculture in Russia and neighboring countries. The Atlas contains 1500 maps that illustrate the distribution of 100 crops, 560 wild crop relatives, 640 diseases, pests and weeds, and 200 environmental parameters. Additionally, the Atlas provides detailed biological descriptions, illustrations, metadata and reference lists. Currently, individual maps can be downloaded and viewed using freely available AgroAtlas GIS Utility software, which can also be downloaded at this site.

Source: www.AgroAtlas.ru

[Audio slideshow: Mapping Africa](#)

Source: BBC News World and [V1 Magazine](#)

[The American Surveyor newsletter](#) (2 March) and [30 March](#)

[GISuser - GIS and Geospatial Technology News](#)

[Think Quarterly](#) – Google's new on-line magazine

[Back to contents](#)

Just for Fun!



[From the International Space Station Astronaut Photography Collection: 'Top Ten' Photos](#)

[Monopoly board game used to smuggle maps to WW2 prisoners of war](#)

<http://www.truthorfiction.com/rumors/m/monopoly-game.htm>

<http://www.snopes.com/military/monopoly.asp>

<http://abcnews.go.com/Technology/monopolys-hidden-maps-wwii-pows-escape/story?id=8605905>

<http://www.mapforum.com/04/escape.htm>

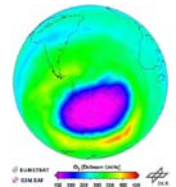
Source: Position magazine No 51, p 49 (Feb/March 2011)



[The annals of chewing gum: Laser Scanning Crime Scene Gum](#) by Gene Roe

There can be DNA on the gum and dental impressions in the gum that can be used to build the case. To obtain the DNA, the sampling procedures “may distort this malleable substance, thereby precluding accurate dental modeling”. The solution – laser scan the gum first to preserve the 3D shape and then convert the scan into a digital model that can be used for dental comparison

Source: LiDAR News



[Geospatial World Weekly's "Image of the Week": recovery of the Ozone layer](#)

Your editors were unable to resist the urge to brighten the visual appearance of the newsletter

Source: Geospatial World Weekly

[Consumer Watchdog warns Taiwanese not to rely on GPS](#)

The Consumers' Foundation in Taiwan urged people not to be over-reliant on GPS devices, to avoid potentially fatal accidents that may result from following GPS directions. The foundation said that consumers who use navigation systems should still keep alert and not rely too much on the gadget

Source: [Taipei Times](#) and Geospatial World

[US imagery](#)

Glenn Letham at our sister site GISuser.com has compiled a state-by-state list of free imagery [HERE](#)

Source: The American Surveyor [newsletter](#)

[Scientific maps as art](#)

Source: Wired.com

[Back to contents](#)

[Map of the Day: The Problem With Maps](#) by Tim Murphy

Source: Mother Jones

[Egyptair omits Israel from maps](#)

Egyptair, Egypt's largest airline, reportedly has erased Israel from the map on its Web site, showing instead Jordan stretching to the Mediterranean Sea. Ynetnews.com reported Wednesday passengers seeking to fly to Tel Aviv will have a hard time finding it as there is no mention of Israel at all on the airline's Web site.

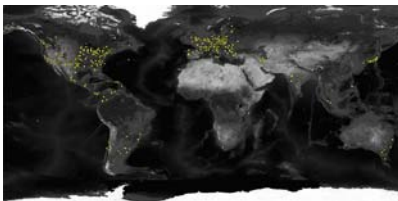
Source: UPI.com

[Hot Jobs Map of America Shows Which States in the US Are the Best to Find Employment](#)

eBay Classifieds created a hot jobs map of America that shows which states in the US are the best to find employment. Reports show that 190,000 new jobs were created in February, and eBay Classifieds, who are all about helping people find jobs, show where these are.

The research to create the map looked at personal income per capita, unemployment rates, and crime rates in each state to determine which states have the most buoyant economies in this still very difficult economic climate. eBay Classifieds then researched the largest occupations and the fastest growing occupations in each state it, then found which cities had the largest median salary in each state to determine which industries were the best for finding a job.

Source: The e-Bay Classifieds blog



[Help Make Better Map of Global Light Pollution](#)

You can help build the best global map of light pollution, the uniquely modern problem that has stolen starlight from most of the urbanized world.

From March 22 through April 6, the [GLOBE at Night](#) website will collect the public's measurements of the night sky. Anyone can participate by comparing their local view of specific constellations with magnitude charts on the site.

Source: Wired Science

[Map: The 12 States of America](#)

Source: The Atlantic Monthly

[Back to contents](#)

Training Opportunities

[Summer School "Advanced Spatial Data Infrastructures", Leuven, Belgium](#)

This event will take at the Irish College in Leuven between 8 and 15 July 2011, and is organised by the University of Melbourne (Australia), Leuven University and Brussels University (both Belgium), and supported by Global Spatial Data Infrastructure (GSDI) Association. The key objective of this Summer School is to enhance the knowledge about the current developments in the field of spatial data infrastructures.

[GIS Courses by Distance Education](#)

[NSW Riverina Tafe](#)

The courses listed below are all full Geographic Information Systems courses which can be studied over a number of semesters by distance study pathways.

[Certificate III in Spatial Information Services \(GIS\)](#)

[Certificate IV in Spatial Information Services \(GIS\)](#)

[Diploma of Spatial Information Services \(GIS\)](#)

Source: [NSW River](#)

[Participatory Spatial Information Management and Communication Training Kit now available on-line](#)

Co-published by CTA and IFAD in English and Spanish, the Training Kit is a unique product that can be tailored to meet user needs, ensuring that employees get the best training available on Participatory Spatial Information Management and Communication.

The online version was launched at the beginning of March 2011. The DVD version was launched in December 2010. The Training Kit contains 15 Modules, each presented through a series of Units. Modules cover the entire

[Back to contents](#)

spectrum of good developmental practice – from mobilising communities to developing a communication strategy based on the outcome of participatory mapping activities. The Modules touch on topics such as the fundamentals of training, ethics and community groundwork and processes as well as the more technical low-, mid- and high-tech participatory mapping methods.

Users decide what they want to cover and when. The product has been developed using the Multimedia Training Kit (MMTK) approach – which allows you to pick and choose those Modules, Units and components that best suit your particular requirements and develop a curriculum to suit your specific needs.

Publishers: Technical Centre for Agricultural and Rural Co-operation ACP-EU (CTA), Wageningen, The Netherlands and International Fund for Agricultural Development (IFAD), Rome, Italy

Source: [The Centre for Agricultural and Rural Cooperation](#)

[Back to contents](#)

Employment Opportunities

Early Stage Researcher "Spatial Data Management/GeoWeb2.0" : Aarhus, DENMARK

Posted: March 21, 2011

Expires: May 01, 2011

Early Stage Researcher (ESR) position within the Marie Curie ITN "GEOCROWD - Creating a Geospatial Knowledge World", to work in the Data-Intensive Systems Group headed by Professor Christian S. Jensen at Aarhus University, Denmark.

Additional Job Details

For details of the Marie Curie Initial Training Network GEOCROWD see <http://www.geocrowd.eu>. Application Website: <http://science.au.dk/en/studies/phd-studies/for-applicants/current-call/> Click "Computer Science" See also: <http://science.au.dk/en/studies/phd-studies/for-applicants/current-call/specific-projects/may-2011/data-intensive-systems-group/>

WWF Greater Mekong Programme, GIS/Data Management Officer

Position title: GIS/Data Management Officer

Reports to: Protected Areas Manager, Annamites Carbon Sinks and Biodiversity project (CarBi project), WWF Laos

Major Duties and Accountabilities:

To support the CarBi project through satellite image habitat analysis, data compilation, mapping of relevant information, aerial picture analysis, and supporting the production of all necessary documentation.

Further Information available from

http://wwf.panda.org/who_we_are/jobs/?199686/WWF-Greater-Mekong-Programme-GISData-Management-Officer

Interested candidates should email a cover letter, curriculum vitae and available degrees and qualifications in English to vacancy@wwfgreatermekong.org by **April 15, 2011**.

[Back to contents](#)

Conference Proceedings

"Nurturing 1 Malaysia through GIS" 17 March 2011

GIS Day is an annual program which is jointly organized by Malaysian Remote Sensing & GIS Society Student Chapter (MRSGISSC), Universiti Putra Malaysia (UPM) and also Malaysian Remote Sensing Society (MRSS).

[Speaker Biographies](#)

Conferences, Events

For upcoming events of global or major international interest, please visit the [upcoming conference list](#) on the GSDI website – as this conference list will be reserved for conferences within or with specific interest to the Asia Pacific Region.

[Back to contents](#)

The editors welcome news of conferences & events from the newsletter subscribers

[Call for Expression of Interest to host AARSE 2014 and future Conferences](#)

Call for Expression of Interest to host the 10th biennial International Conference of the African Association of Remote Sensing of the Environment (AARSE) in October 2014 and future Conferences. The 9th conference will be held in Morocco in October 2012.

Date	Location	Event
April 2011		
10 – 15 April	Sydney, Australia	34th International Symposium on Remote Sensing of Environment (ISRSE)
11 – 13 April	Munich, Germany	Joint urban remote sensing event
12-16 April	Seattle, USA	AAG Annual Meeting
13-15 April	Moscow, Russia	V Anniversary International Conference “Remote Sensing – the Synergy of High Technologies”
17-19 April	Doha, Qatar	Map Middle East - 7th Annual Middle East conference & Exhibition on Geospatial Technology & Applications Contact
19 – 21 April	Santa Clara, California	Where 2.0
24-26 April	Khobar, Eastern Province, Saudi Arabia.	The Sixth National GIS Symposium in Saudi Arabia
May 2011		
3 – 8 May	Antalya, Turkey	Gi4DM 2011 – Geoinformation for Disaster Management. Contact Full papers for Proceedings are required by March 31, 2011
10-13 May	Lakewood, Colo., USA	USGS holds National Map Users Conference The U.S. Geological Survey’s (USGS) National Geospatial Program (NGP) and the Office of Enterprise Information announced The National Map (TNM) Users Conference, and the Geographic Information Science Workshop to be held May 10-13, 2011 in Lakewood, Colo. According to the announcement, this inaugural event will assemble a wide range of participants including scientists, managers and geospatial professionals from government, industry, academia and other organizations. A goal of TNM UC is to share accomplishments and progress, acknowledge best practices, and exchange innovative ideas concerning The National Map in supporting science initiatives. The role of the GIS Workshop will be learning specific techniques for using GIS in support of science. Interactive dialog will be encouraged through panel and lightning sessions, poster presentations, workshops, and demonstrations.
12-13 May	Isle of Capri, Italy	Workshop on Global Scientific Data Infrastructures: the big data challenges This Workshop will be held at the “Hotel La Palma” in the island of Capri, Italy. Registration The participation is free and the organizers will be able to offer the coffee- breaks, working lunches, and a social dinner. The participants have to cover their own travel and lodging expenses. To register to the Workshop, fill in the online form . Upon registration, you will receive an email confirmation message. Registration for the workshop is limited by the venue capacity. Early registration is strongly recommended. Organizing Committee - Costantino Thanos , CNR-- ISTI, Italy

[Back to contents](#)

		and Yannis Ioannidis , University of Athens, Greece Secretariat support - Catherine Bosio , CNR--- ISTI, Italy
17 – 18 May “NEW”	Essen, Germany	Faro 3-D Documentation Conference
18 – 22 May	Marrakech, Morocco	FIG Working Week
16-18 May 2011 “NEW”	Almaty, Kazakhstan	Pre-Conference Workshop at the Annual GIS in Central Asia Conference (GISCA) A limited number of workshop travel grants for EPU members are available. There is a limit of max. 2 grants for participants per EPU member institution. Selection will be done by the Workshop committee and organization team. Application for workshop participation must include: - Letter of Motivation (max. 1 page) describing the relevance of the workshop topics to the academic and research focus of the applicant. - Short CV providing an overview about the academic and research background including the level of potential GIS experience of the applicant. - All documents must be submitted in English in digital form not later than April 8, 2011 to the organizing committee . - Notification of acceptance: April 15, 2011 - Confirmation of participation: April 21, 2011
19 – 20 May	Almaty, Kazakhstan	Annual Central Asia GIS Conference - GISCA 2011 Geoinformatics: Managing Environment, Resources and Risk March 1 - Submission of abstracts CLOSED April 1 - Notification of acceptance May 1 – Fully formatted copy of full papers uploaded (see authoring instructions!) May 1 – Registration for poster exhibit Local organisation: gisca11-info@aca-giscience.org Program enquiries: gisca11@aca-giscience.org
26 – 29 May	Nanjing, CHINA,	LIDAR and Radar Mapping: Technologies and Applications Full paper submission deadline - CLOSED Contact
31 May – 2 June	Cape Town, South Africa	AfricaGEO 2011
June 2011		
4 June “NEW”	Sydney, Australia	“whereNSW” Camp -The all day spatial camp will be held Sydney on Saturday, 4 June 2011. NSW Location Intelligence Strategy The NSW Government is developing a high level, whole-of-government strategy to plan and manage spatial information, infrastructure and services across NSW. The team will be encouraging participation and consultation through a range of channels, including • Engagement with NSW Spatial Council • Online consultative tools • “whereNSW” Camp • Targeted one-on-one stakeholder interviews • NSW Location Intelligence Strategy Thought Leadership Forum.
14 June	Washington, D.C	Forum On Earth Observations V
15 – 17 JUNE	Munster, Germany	GEOINFORMATIK 2011
20 – 23 JUNE	University of Cantabria, Santander, Spain.	"Cities, Technologies and Planning" CTP 11 in conjunction with The 2011 International Conference on Computational Science and its Applications (ICCSA 2011)

21 – 22 JUNE	University of Nottingham, UK	<u>Third Open Source GIS UK Conference - OSGIS 2011</u>
21 – 23 JUNE	Dijon, France	<p><u>The International Conference on Digital Information and Communication Technology and its Applications (DICTAP2011)</u> Université de Bourgogne</p> <p>For inquires, please send email to di@sdiwc.net</p> <p>All the papers will be reviewed and the accepted papers in the conference will be published in the “Communications in Computer and Information Science” (CCIS) of Springer Lecture Notes Series < www.springer.com/series/7899 >, and will be indexed in many global databases including ISI Proceedings and Scopus. In addition, selected papers after complete modification and revision will be published in the special issues journals.</p> <p>Researchers are encouraged to submit their work electronically. Submitted paper should not exceed 15 pages, including illustrations. Papers should be submitted electronically. All papers will be fully refereed by a minimum of two specialized referees. Before final acceptance, all referees comments must be considered.</p> <p>Important Dates</p> <p>=====</p> <p>Submission Date : CLOSED</p> <p>Camera Ready submission : April 10, 2011</p> <p>Registration : April 10, 2011</p>
22 – 24 JUNE	Kuala Lumpur, Malaysai	<p>SEASC and ISC 2011</p> <p>The 11th South East Asian Survey Congress and the 13th International Surveyors’ Congress.</p> <p>The theme “Innovation towards Sustainability”, in conjunction with the Institution of Surveyors Malaysia’s 50th year celebrations.</p>
27 – 29 JUNE	<u>Universiti Malaysia Pahang, Malaysia</u>	<p>ICSECS 2011 (Malaysia)</p> <p>The Second International Conference on Software Engineering and Computer Systems (ICSECS2011)</p>
28 June - 7 July	Melbourne, Australia	<p>XXV IUGG General Assembly</p> <p>Earth on the Edge: Science for a sustainable Planet</p> <p>The IUGG 2011 Scientific Program Committee invites the submission of abstracts on original work to be considered for oral or poster presentation at the IUGG 2011 General Assembly</p> <p>Contact Download Brochure</p>
28 June - 7 July	Melbourne, Australia	<p>IAG General Assembly</p> <p>Download Brochure</p>
29 June - 1 July	Fuzhou, China	<p>ICSDM 2011 & BJ-IWGIS 2011</p> <p>IEEE International Conference on Spatial Data Mining and Geographical Knowledge Services (ICSDM 2011) – AND - Beijing International Workshop on Geographical Information System (BJ-IWGIS 2011)</p> <p>The conference theme is "Bridging the Gap Between Spatial Information Technology and Geoscience Research".</p> <p>One of the keynote addresses is titled "SDI and Digital Asia as Information Commons."</p>
July 2011		
3 - 8 July	Paris	<p>25th International Cartographic Conference.</p> <p>15th General Assembly of the International Cartographic Association (ICA)</p> <p>Abstracts were due 4th October, 2010.</p> <p>Contact: regist-icc2011@europa-organisation.com</p>
5 – 8 July	Salzburg, Austria	GI Forum 2011

6 – 8 July “NEW”	Islamabad, Pakistan	<p>Call for papers at the 3rd International Conference on Advances in Space Technologies (ICAST)</p> <p>This conference will focus on the use of space technologies for hydrologic disasters & climate change research. ICAST will raise awareness on the applications of space-borne sensors for hydro-meteorologic extremes, water resources management and climate change studies. This conference will improve international collaboration on scientific and technical research on emerging issues of the region.</p> <p style="text-align: right;">Contact – OR – Contact#2</p> <p>Please submit your abstract by 4th April 2011. Registration</p>
9 – 12 July	San Diego	<p>Esri and ACSM - Event for Surveyors and Mapping Professionals</p>
11 – 15 July	San Diego	<p>ESRI International USER CONFERENCE</p>
11 – 13 July	Macau	<p>3rd International Conference on Networked Digital Technologies (NDT 2011)</p>
19 – 22 July “NEW”	Ulaanbaatar, Mongolia	<p>17th Meeting of the Permanent Committee on GIS Infrastructure for Asia and the Pacific (PCGIAP)</p> <p>- held in conjunction with 4th International Land Administration Forum</p> <p>The aims of PCGIAP are to maximize the economic, social and environmental benefits of geographic information in accordance with Agenda 21 by providing a forum for nations from Asia and the Pacific to:</p> <ol style="list-style-type: none"> a. cooperate in the development of a regional geographic information infrastructure; b. contribute to the development of the global geographic information infrastructure; c. share experiences and consult on matters of common interest; and d. participate in any other form of activity such as education, training, and technology transfer. <p>For further information, contact host, Mr. Ariunbold or Jane Hong.</p>
19 – 22 July “NEW”	Mayagüez, Puerto Rico	<p>Surveying and Geomatic Educators Society Biannual Conference</p>
21 – 22 July	Rio de Janeiro, Brazil	<p>THE THIRD INTERNATIONAL CONFERENCE ON CLIMATE CHANGE: IMPACTS AND RESPONSES</p>
28-29 July “NEW”	National University of Singapore, Singapore	<p>Remote sensing, natural hazards and environmental change 2011</p> <p>This conference is organized by the Centre for Remote Imaging and Sensing (CRISP), National University of Singapore; Laboratoire Magmas et Volcans (LMV), Université Blaise Pascal; and the Working Group for Large Rivers and Climate Change, International Association of Geomorphologists.</p> <p>The conference is designed to initiate informal discussion and paper presentation in two areas that are significant for the Asia Pacific Region and especially Southeast Asia. First of these involve natural hazards with emphasis on volcanoes, earthquakes, tsunamis and large floods. The second concerns environmental changes including climate change, modification of hydrological and geological processes and urbanization. The application of remote sensing in both observing such phenomena and ameliorating their non-beneficial effects will be emphasized. The conference provides a forum for exchange of views among researchers currently working in this area and for designing research strategies for the future.</p> <p>Liew Soo Chin, CRISP, NUS; Jean-Claude Thouret, LMV, Blaise Pascal; Avijit Gupta, Large Rivers and Climate Change, IAG</p>

August 2011		
3 – 4 August “NEW”		<p>1st Conference on Advances in Geomatics Research The Department of Geomatics and Land Management, Makerere University invites you to the 1st Conference on Advances in Geomatics Research to be held from the 3rd – 4th of August 2011 at the CEDAT Conference Hall – Makerere University Kampala, Uganda. The theme of the conference is “Geomatics Research for Sustainable Development”. The theme seeks to bring to the fore Geomatics research and practice taking place internationally, regionally and locally in Uganda. The conference essentially seeks to highlight, promote, share and encourage scholarship in the various Geomatics sub-disciplines such as Geographical Information Systems (GIS), Remote Sensing, Engineering Surveying, Global Navigation Satellite Systems (GNSS) Geodesy, Land Management etc. The conference will include preconference workshops, plenary and technical sessions. Contact: Moses Musinguzi - Head Geomatics and Land Management Department – OR – Anthony Gidudu - Organising Committee Chair</p>
5 - 7 August	Washington, DC USA	THIRD INTERNATIONAL CONFERENCE ON SCIENCE IN SOCIETY
8 - 10 August	Taipei	AOGS 2011 Geosciences World Community Exhibition The Geosciences World Community Exhibition will be held in conjunction with the 8th Annual Meeting of the Asia Oceania Geosciences Society (AOGS)
15 - 19 August	Nairobi, Kenya	AGSE 2011 Submissions closed February 16, 2011
17 - 19 August “NEW”	Rio de Janeiro, Brazil	Latin American Geospatial Forum
23 – 25 August	Perth, Australia	7th International Symposium on Digital Earth (ISDE7) Held in conjunction with WALIS Forum 2011 and the 2011 NRM Conference Call for Papers closed
September 2011		
9 – 11 September	Denver, Colorado	State of the Map (SotM)
12 – 16 September	Denver, Colorado	FOSS4G 2011
28 – 30 September	The Delft, Netherlands	UDMS 2011
October 2011		
20 - 21 October “NEW”	Guilin, China	<p>ISPRS Workshop on Geospatial Data Infrastructure: From data acquisition and updating to smarter devices 2011 Contact Deadline for abstracts: April 30, 2011 The objective of the workshop is to provide a platform for scholars and professionals in relevant areas to exchange research ideas and interests, to present the newest research results, to discuss the cutting-edge technology, and to promote the development and application of SDI and the international collaboration.</p>
November 2011		
14 – 18 November	Santiago, Chile	UGI 2001 International Geographic Union “Regional Geographic Conference” Contact Brochure & Call for Papers

[Back to contents](#)

15 – 17 November	Canberra, Australia	Spatial@Gov2011
21 – 25 November	Wellington, New Zealand	Surveying & Spatial Sciences Conference 2011
29 November – 2 December	University of Melbourne, AUSTRALIA	The State of Australian Cities Key Dates Call for abstracts closed 28 FEB 2011 Notification of accepted abstracts 01 APR 2011 Full papers due 06 MAY 2011 Reviewed papers returned 01 JUL 2011 Early registration closes 29 JUL 2011 Final papers due 31 OCT 2011
May 2012		
13-17 May “UPDATED”	Quebec City, Canada	2012 Joint World Conference GSDI 13 and Canadian Geomatics Conference (CCC) hosted by GEOIDE Network GSDI 13 invites presentations/papers covering the full range of practice, development and research experiences that advance the practice and theory of spatial data infrastructure development and spatial enablement of society. GSDI 13 will support three primary forms of publication: (1) a normal conference proceedings with abstracts and full articles (non-refereed and refereed), published on a CD, (2) a pre-conference published book of fully refereed articles, and (3) a post-conference special edition of the International Journal of Spatial Data Infrastructures Research (IJS DIR) with full articles selected from the proceedings and then fully refereed and revised after the conference.
August 2012		
25 August – 1 September	Melbourne, Australia	XXII International Society for Photogrammetry & Remote Sensing Congress Email: isprs2012@icms.com.au
October 2012		
	Morocco	10th biennial International Conference of the African Association of Remote Sensing of the Environment (AARSE)
2014		
	Malaysia	Malaysia will be hosting the (International Federation of Surveyors) FIG Congress in 2014. The decision was taken at the recently concluded FIG Congress 2010 in Sydney, Australia.

[Back to contents](#)

To subscribe to SDI-AP, please do so [online](#). To contact please [email](#) the editors. [Global Spatial Data Infrastructure Association](#).

Please mention SDI-AP as a source of information in any correspondence you may have about items in this issue.

DISCLAIMER: The Editor and Web Host will not be held liable for any errors, mistakes, misprints or incorrect information.

Copyright © 2011. All rights reserved.



[Back to contents](#)